
ACCESSORIES - 50

PARTS CATALOG,
SERVICE MANUAL &
SERVICE TIME
SCHEDULE CODE

		Page
501.01	Ventilation and Heating	50-1
501.03	Air Conditioning	50-5

TROUBLESHOOTING

Insufficient heat or ventilation may be caused by problems other than a faulty heater. Before disassembly, check for the following:

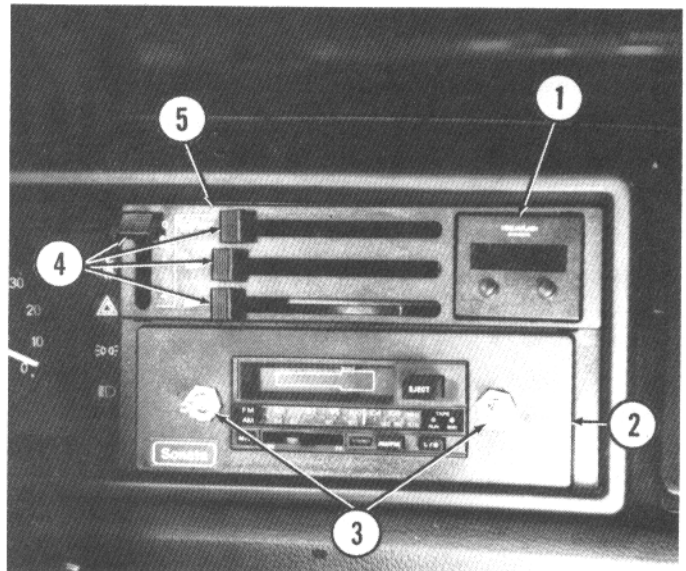
- Leaves or other debris blocking radiator.
- Leaves or other debris blocking fresh air inlet.
- Faulty coolant thermostat.
- Blown fuse or faulty electrical system components.
- Low coolant level.
- Kinked or otherwise blocked heater hoses.
- Cooling system contamination.

CONTROL PANEL

REMOVAL AND INSTALLATION

- Disconnect battery ground cable.
- Remove radio knobs.
- Remove two nuts (3) and washers retaining radio.
- Remove radio fascia panel (2) and remove radio.
- Remove four knobs (4) from levers.
- Remove control panel fascia panel (5).
- Remove and disconnect clock (1), or remove clock opening cover plate.

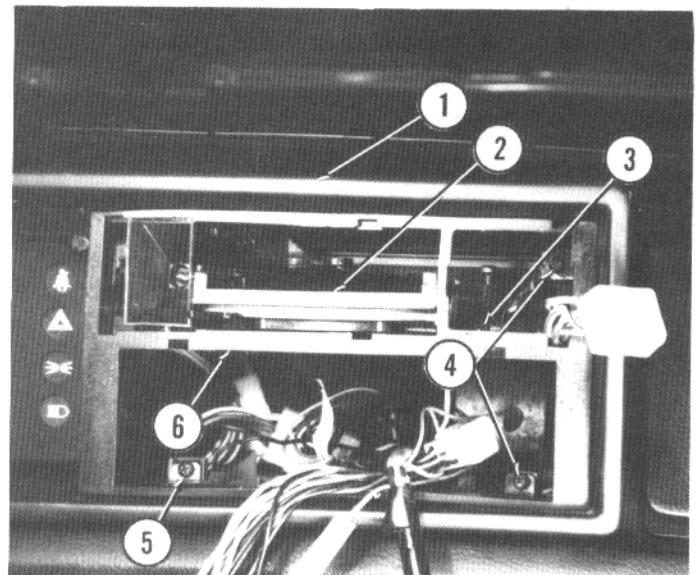
1. Clock 2. Fascia panel 3. Nuts 4. Knobs 5. Fascia panel



- Remove screw (3) holding control panel (2) to support (6).
- Remove four screws (4 and 5) holding support to instrument panel (1).

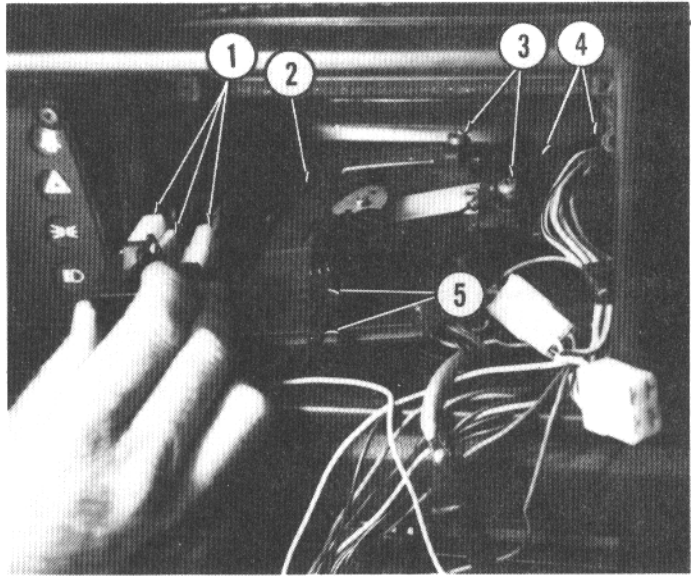
Maneuver support out of instrument panel, leaving control panel in position.

1. Instrument panel 2. Control panel 3. Screw 4. Screws 5. Screw 6. Support



Remove connectors (1) from fan switch and light.
 Remove three screws (3) and clamps holding cables (4).
 Disconnect cables from levers (5) and remove control panel (2).
 Install in reverse order.

- 1. Electrical connectors
- 2. Control panel assembly
- 3. Screws
- 4. Cables
- 5. Levers

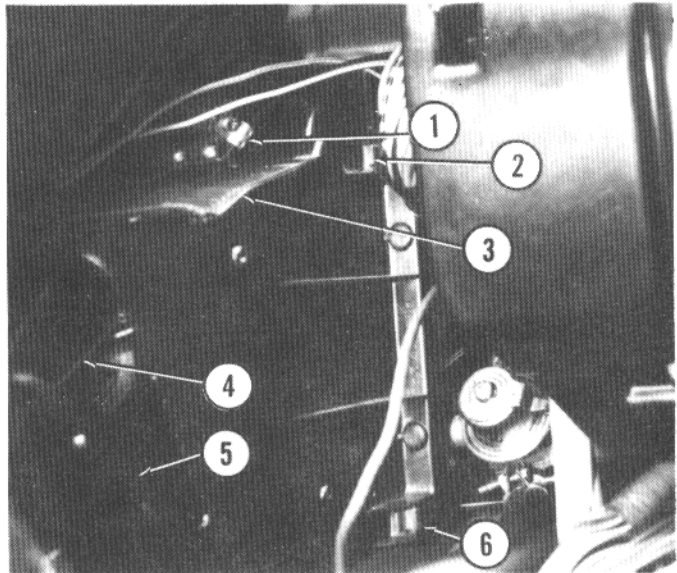


BLOWER

REMOVAL AND INSTALLATION

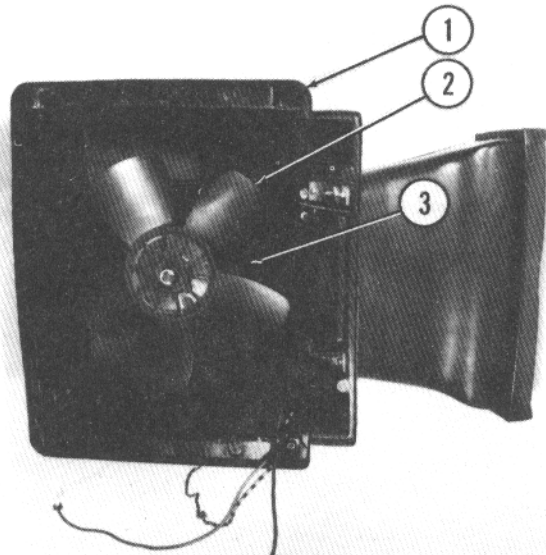
Disconnect battery ground cable.
 Disconnect end of cable (4) from heater door (5) and remove screw and clamp (1) holding cable to lower housing (3).
 Pull cable out of lower housing.
 At left side of housing, disconnect three blower leads.
 Remove four clips (2 and 6) holding lower housing.
 Maneuver lower housing out of vehicle complete with duct for center vents.

- 1. Clamp
- 2. Clip
- 3. Lower housing
- 4. Cable
- 5. Heater door
- 6. Clip



Remove blower fan shroud.
 Remove two clips (3) holding blower assembly (2).
 Remove blower assembly from lower housing (1).
 Install in reverse order.

- 1. Lower housing
- 2. Blower assembly
- 3. Clip



HEATER CORE

REMOVAL AND INSTALLATION

Disconnect battery ground cable.

Drain cooling system.

Disconnect end of cable (4) from heater door (5) and remove screw and clamp (1) holding cable to lower housing (3).

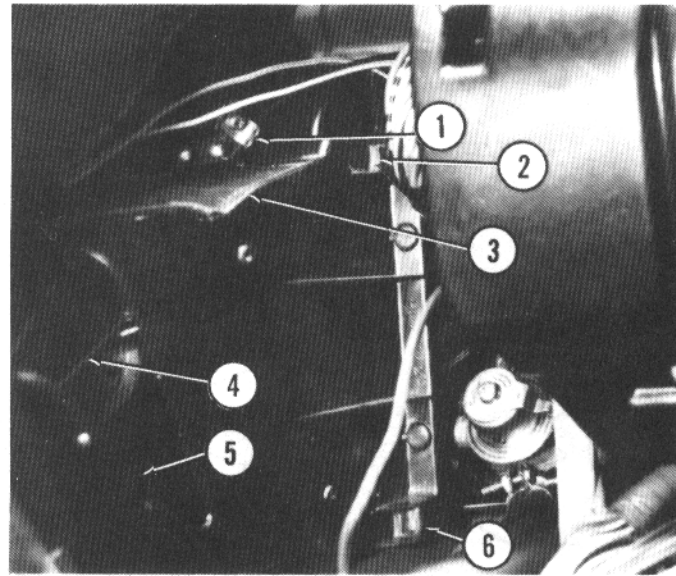
Pull cable out of lower housing.

At left side of housing, disconnect three blower leads.

Remove four clips (2 and 6) holding lower housing.

Maneuver lower housing out of vehicle complete with duct for center vents.

1. Clamp 2. Clip 3. Lower housing 4. Cable 5. Heater door 6. Clip



Place container on floor to catch coolant.

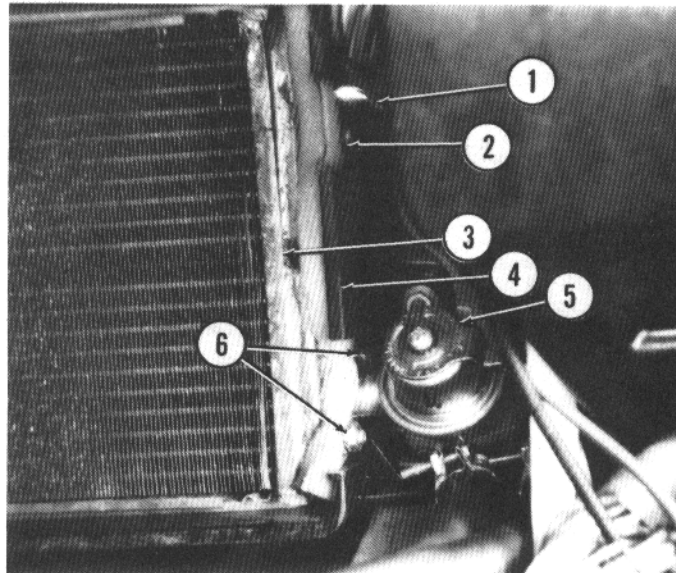
Remove two nuts (6) holding water valve (5) to heater core (3) and separate valve from core.

Remove two nuts (2) holding pipe (1) to heater core and separate pipe from core.

Slide heater core out of upper housing (4) and remove from vehicle.

Install in reverse order. Use new gaskets.

1. Water pipe 2. Nut 3. Heater core 4. Upper housing
5. Water valve 6. Nuts



WATER VALVE

REMOVAL AND INSTALLATION

Disconnect battery ground cable. Drain cooling system.

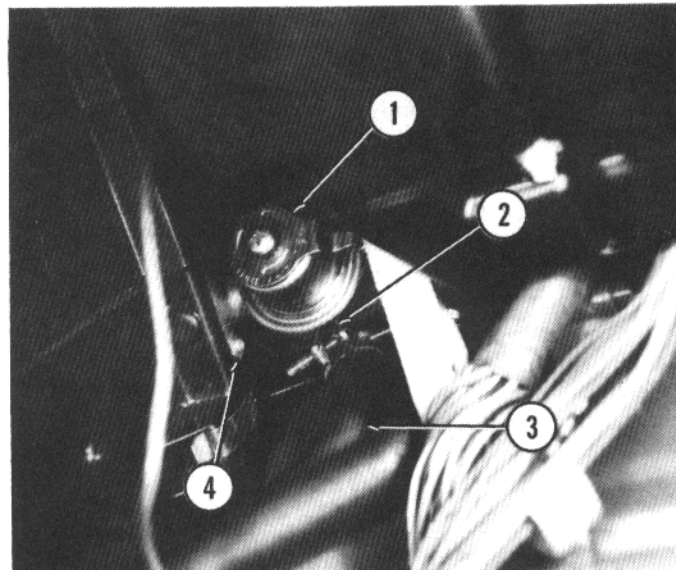
Remove screw and clamp holding control cable to valve (1). Disconnect cable end from valve.

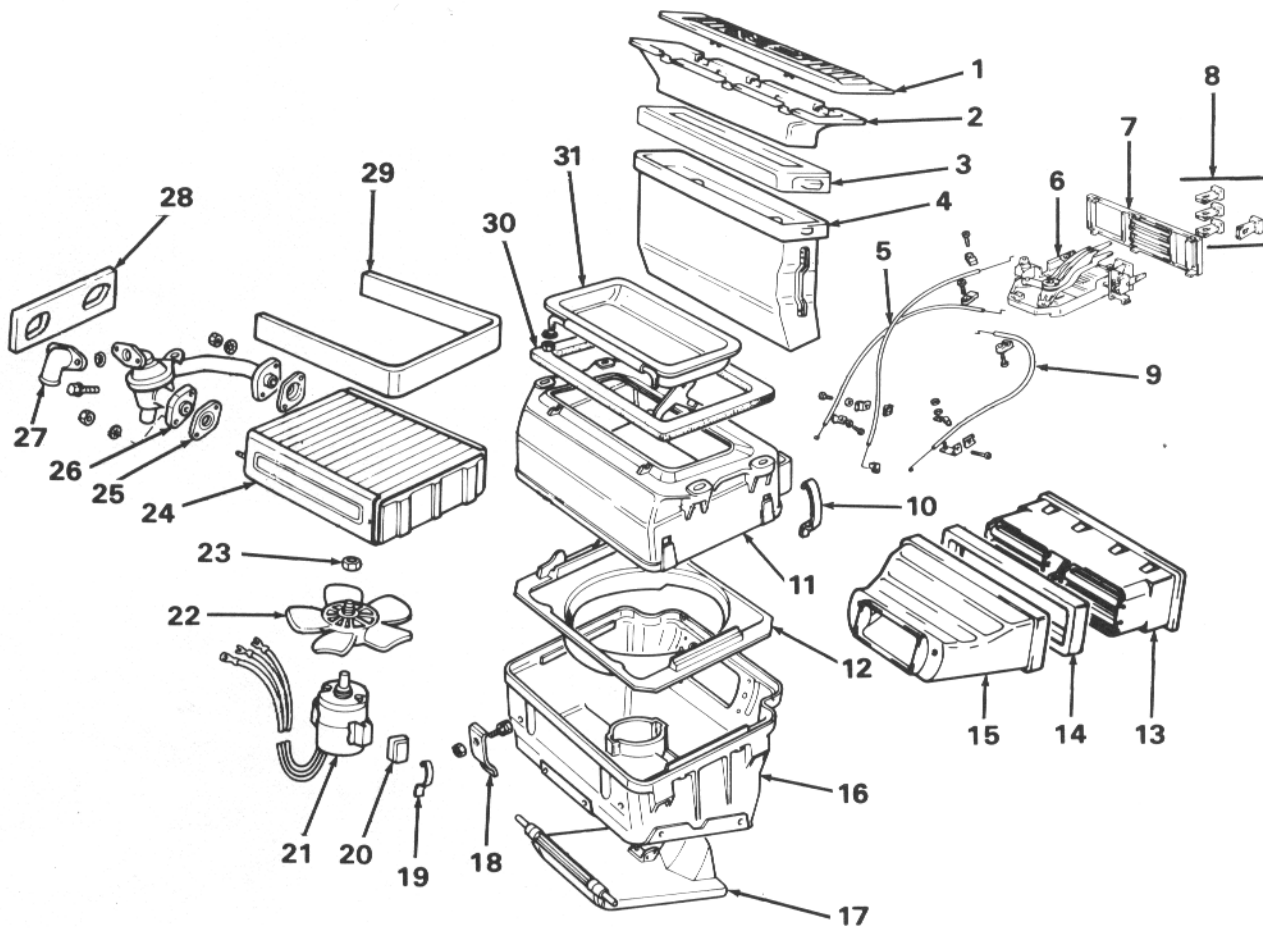
With container on floor to catch coolant, loosen clamp (2) and disconnect hose (3) from valve.

Remove two nuts (4) holding valve to heater core and remove valve.

Install in reverse order. Use new gasket.

1. Water valve 2. Clamp 3. Hose 4. Nut





- 1. Diffuser
- 2. Duct
- 3. Gasket
- 4. Duct
- 5. Cables
- 6. Control panel
- 7. Fascia panel
- 8. Knobs
- 9. Cable
- 10. Clip
- 11. Upper housing

- 12. Fan shroud
- 13. Vent assembly
- 14. Gasket
- 15. Duct
- 16. Lower housing
- 17. Heater door
- 18. Hinge
- 19. Clip
- 20. Pad
- 21. Blower motor

- 22. Fan
- 23. Nut
- 24. Heater core
- 25. Gasket
- 26. Water valve
- 27. Pipe
- 28. Gasket
- 29. Pad
- 30. Gasket
- 31. Air intake door

EXPLODED VIEW OF HEATER ASSEMBLY