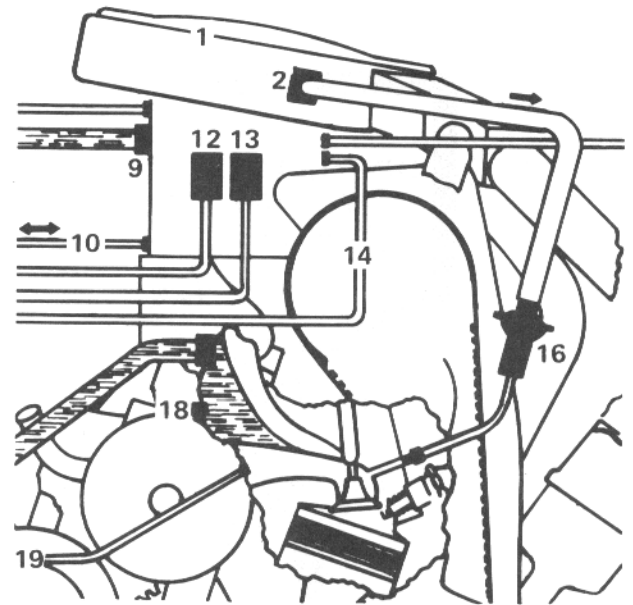


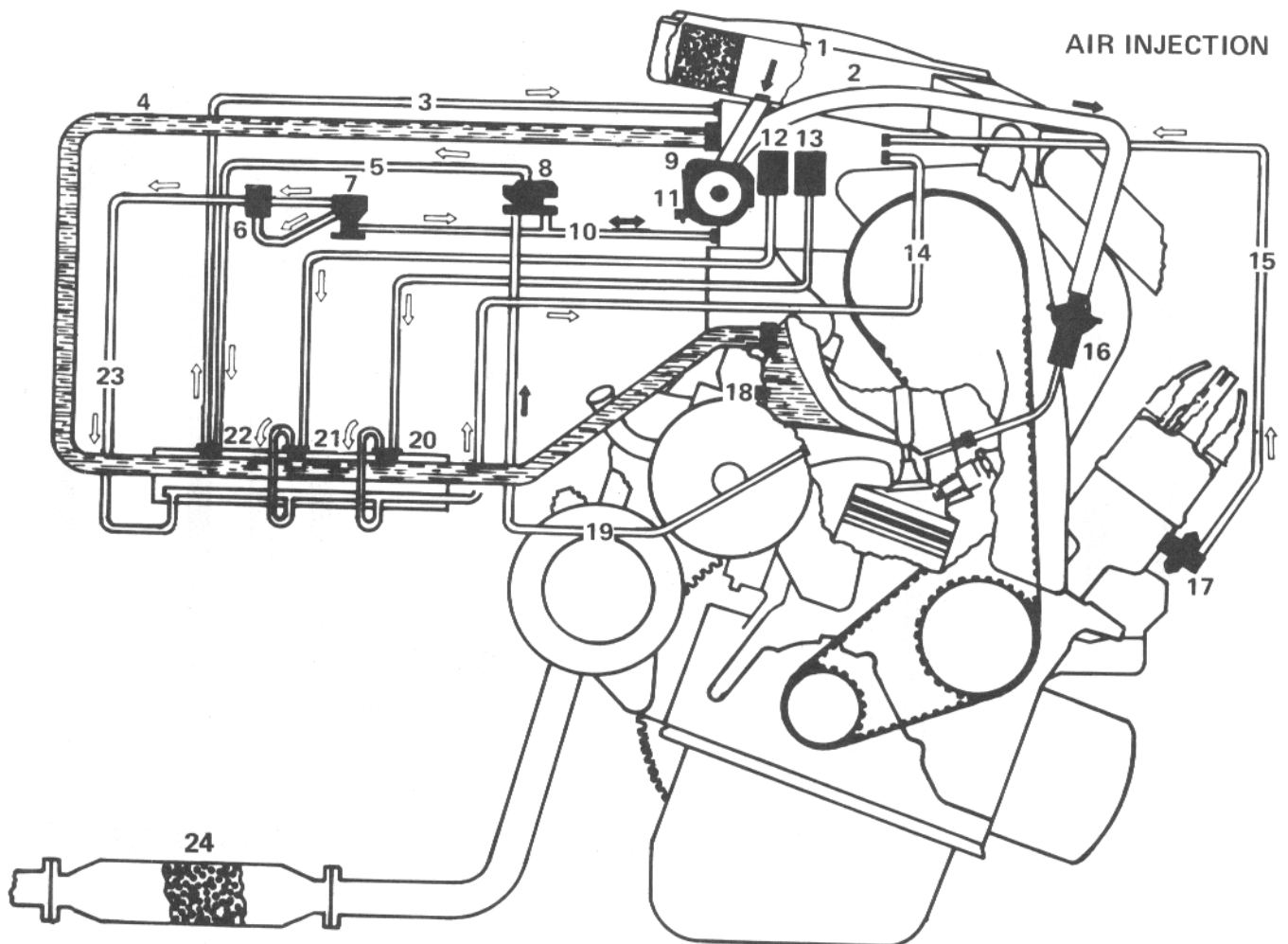
# Exhaust and Emission Control System 102.58

Page 10-105

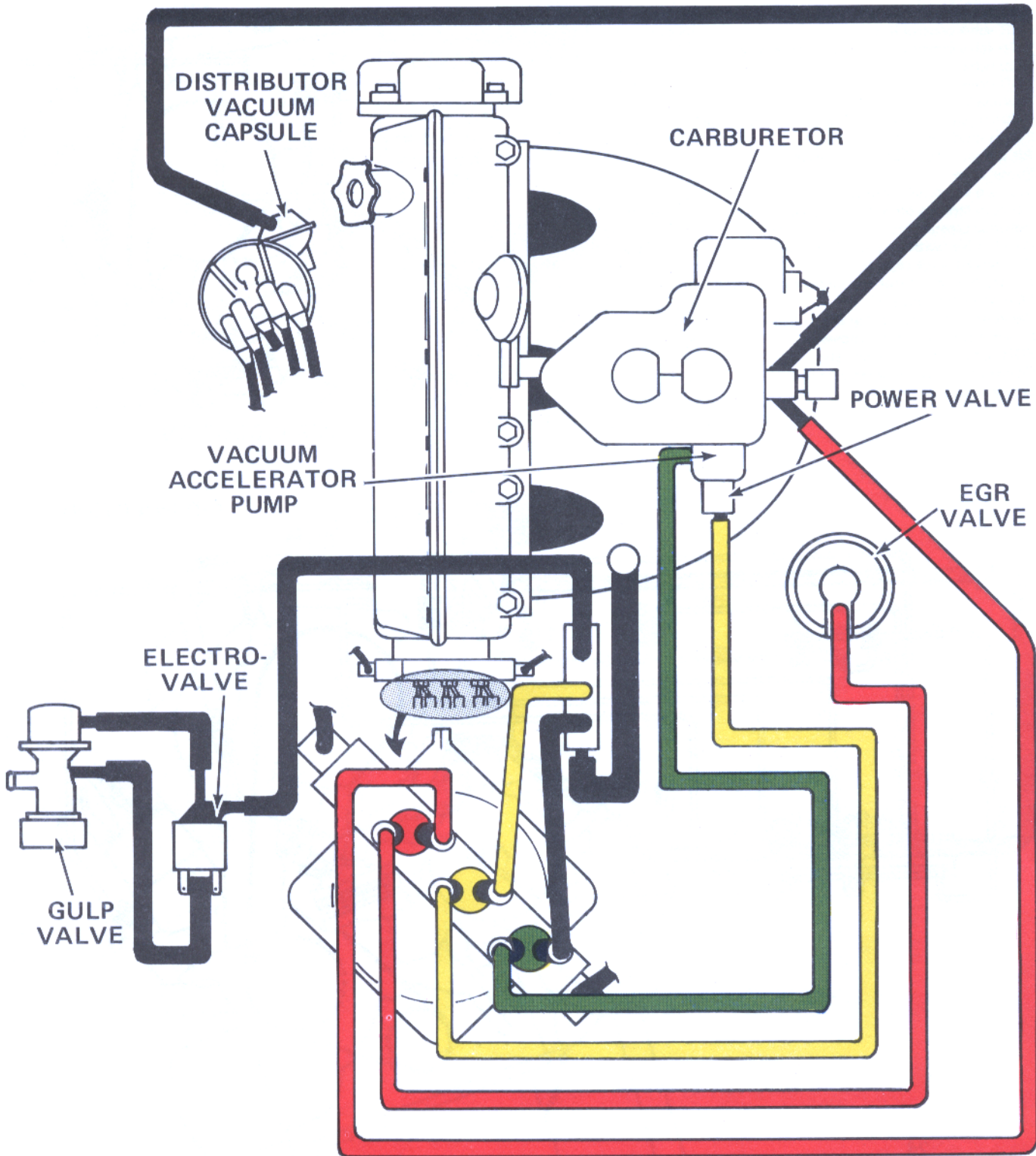
1. Engine air cleaner
2. Air distribution line
3. Vacuum tapping line for thermostable 22
4. Heated water line for thermostables and automatic choke
5. EGR valve control line
6. Gulp valve control electrovalve-three-way
7. Gulp valve
8. EGR valve
9. Automatic choke
10. Exhaust gas line from EGR valve to intake manifold and gulp valve line to intake manifold
11. Air pump and pressure relief valve
12. Power valve
13. Vacuum accelerator pump
14. Vacuum tapping lines for electrovalves 6 and thermostables 20-21
15. Advance capsule vacuum tapping line
16. Check valve (with air pump) reed valve (without air pump)
17. Vacuum advance capsule
18. Electrovalve 6 control thermostable
19. EGR valve tapping line
20. Vacuum accelerator pump control thermostable
21. Power valve control thermostable
22. EGR valve control thermostable
23. Electrovalve 6 vacuum tapping line
24. Catalytic converter



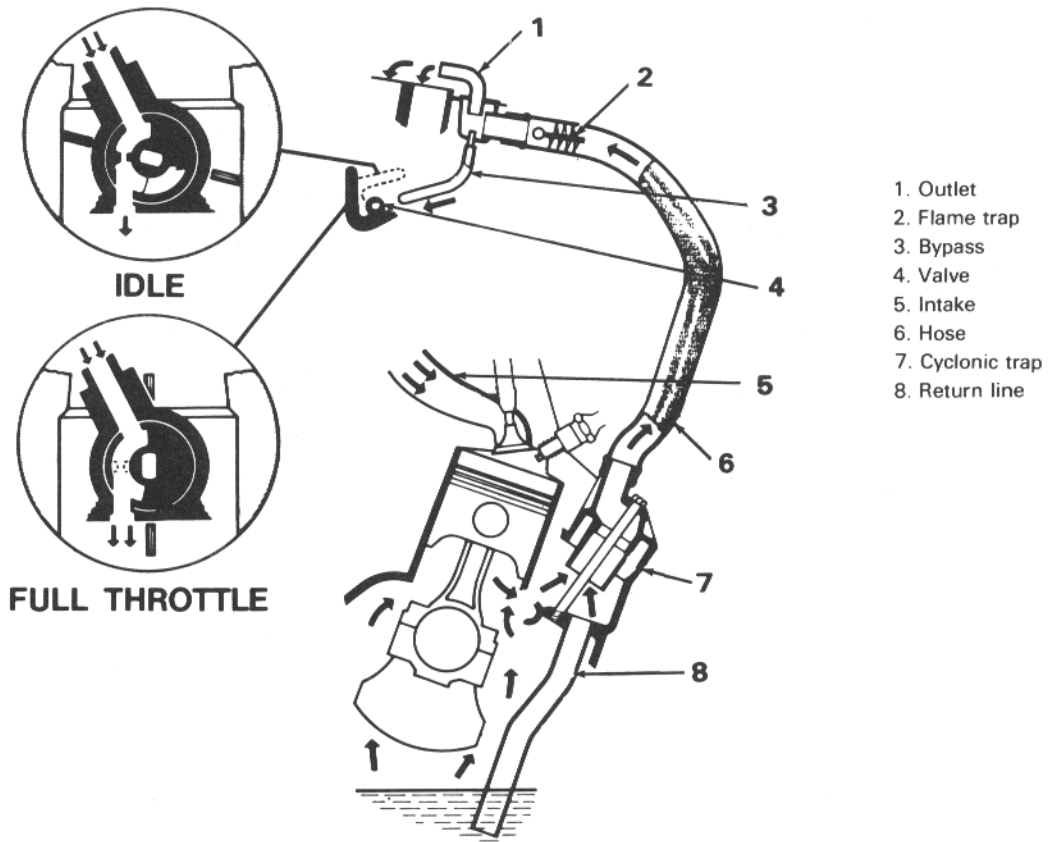
AIR INDUCTION



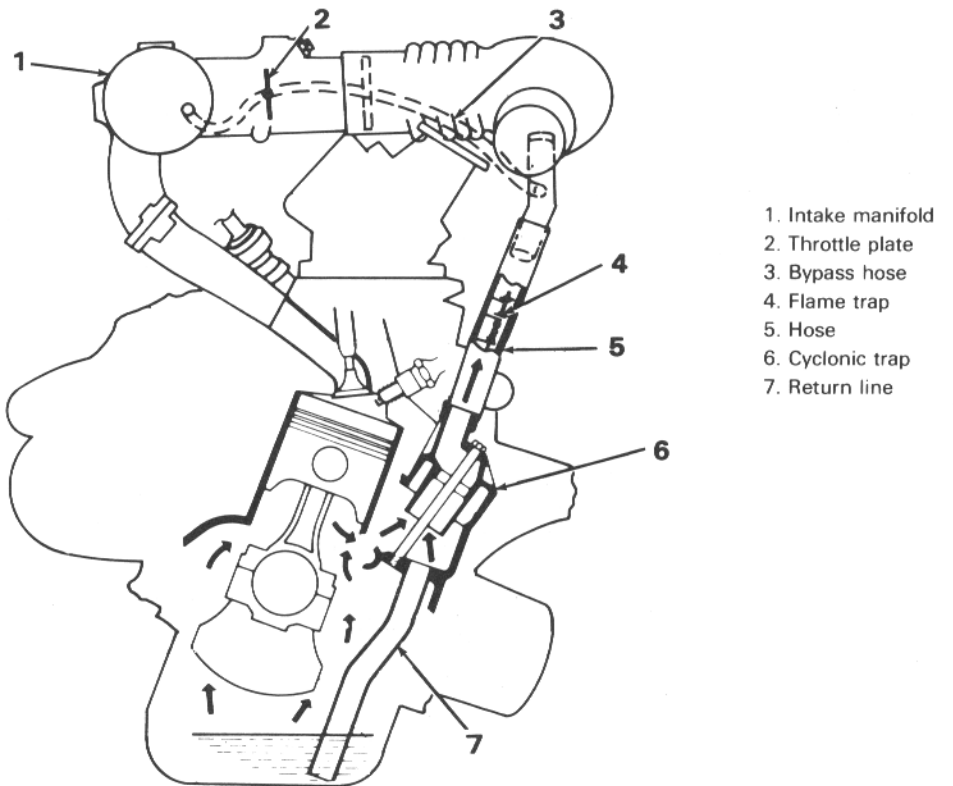
EXHAUST EMISSION CONTROL SYSTEM  
(VEHICLES WITH CARBURETOR)



EMISSION VACUUM CONTROLS

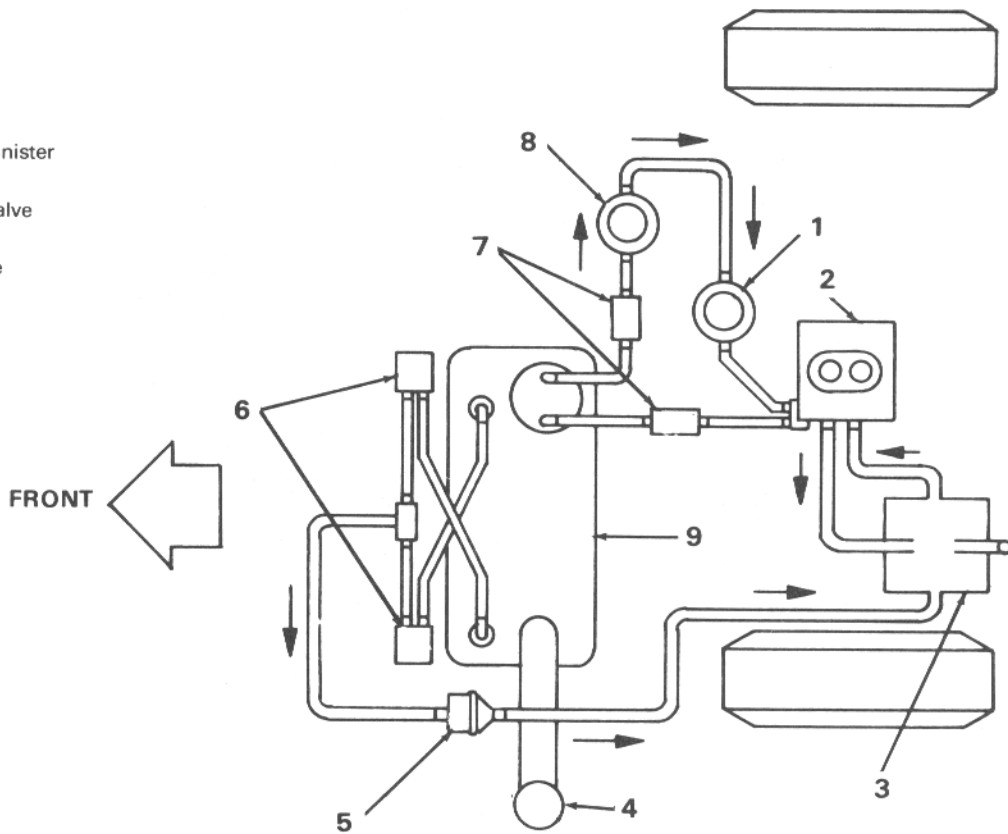


VEHICLES WITH CARBURETOR



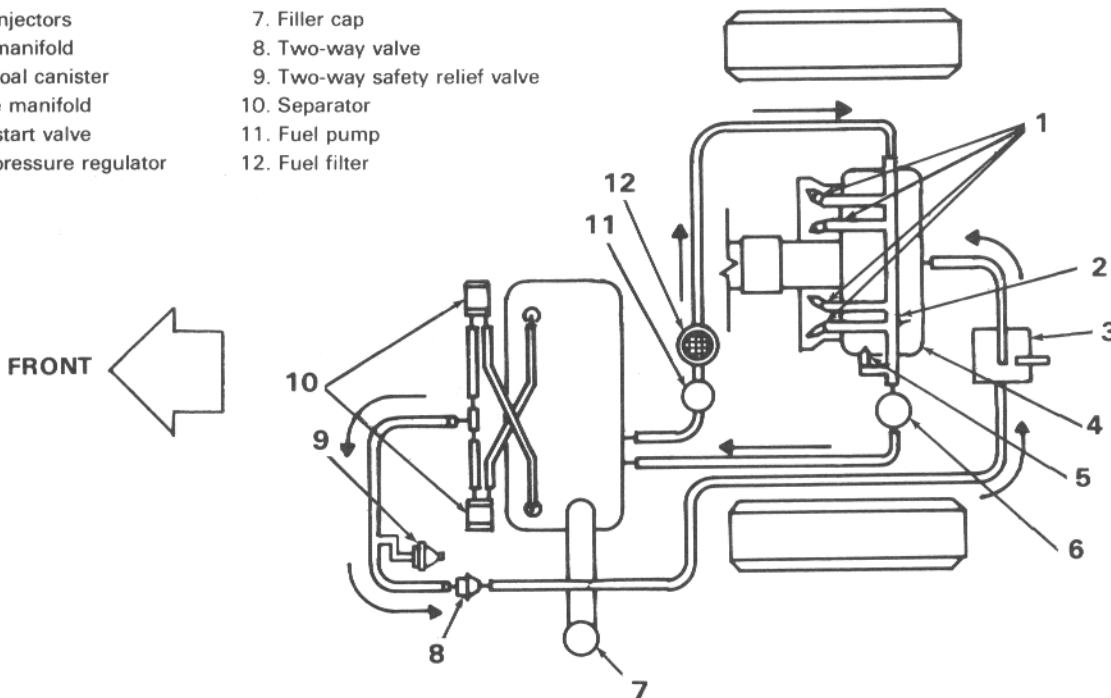
VEHICLES WITH FUEL INJECTION

- 1. Fuel filter
- 2. Carburetor
- 3. Charcoal canister
- 4. Filler cap
- 5. Two-way valve
- 6. Separator
- 7. Check valve
- 8. Fuel pump
- 9. Fuel tank



VEHICLES WITH CARBURETOR

- 1. Fuel injectors
- 2. Fuel manifold
- 3. Charcoal canister
- 4. Intake manifold
- 5. Cold start valve
- 6. Fuel pressure regulator
- 7. Filler cap
- 8. Two-way valve
- 9. Two-way safety relief valve
- 10. Separator
- 11. Fuel pump
- 12. Fuel filter



VEHICLES WITH FUEL INJECTION

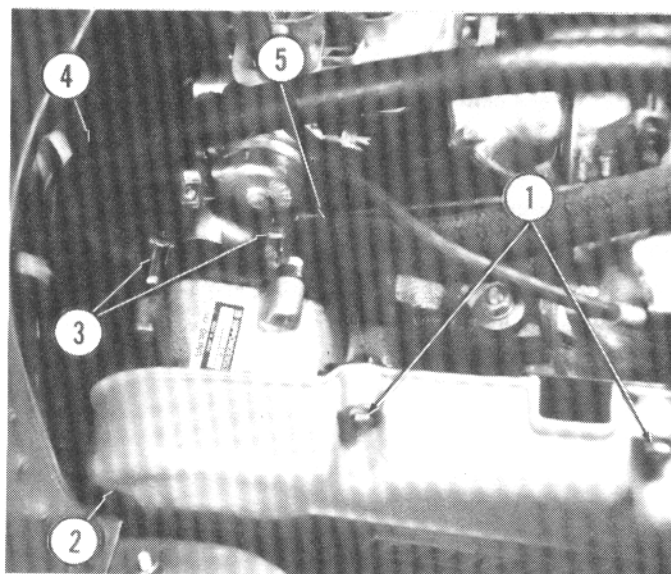
## AIR PUMP

### REMOVAL AND INSTALLATION

Remove three bolts (1) holding upper half of timing belt cover (2) to engine and remove cover.

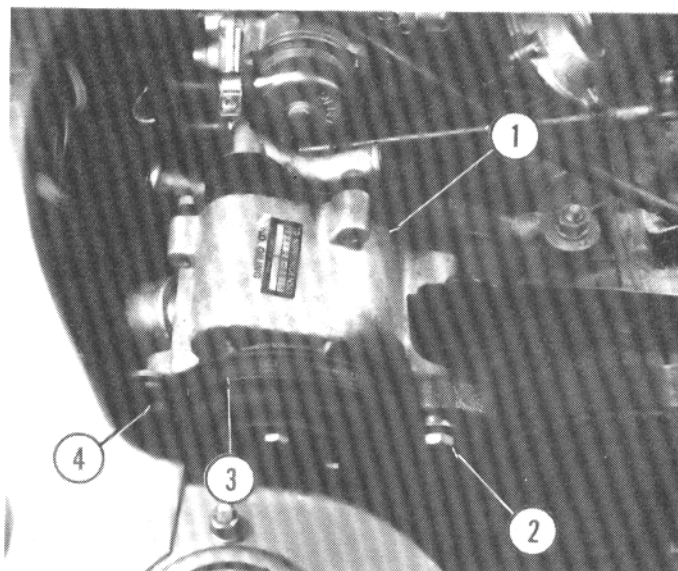
Loosen clamps (3) retaining air pump intake (5) and pressure (4) hoses and remove hoses.

1. Bolts 2. Timing belt cover 3. Clamps 4. Pressure hose  
5. Intake hose



Remove adjusting bolt (4) and slip drive belt (3) off of pulley. Remove pivot through bolt (2) and remove air pump (1). Installation is reverse of removal. To adjust belt, refer to 101.15.

1. Air pump 2. Pivot bolt 3. Drive belt 4. Adjusting bolt



## GULP VALVE

### REMOVAL AND INSTALLATION

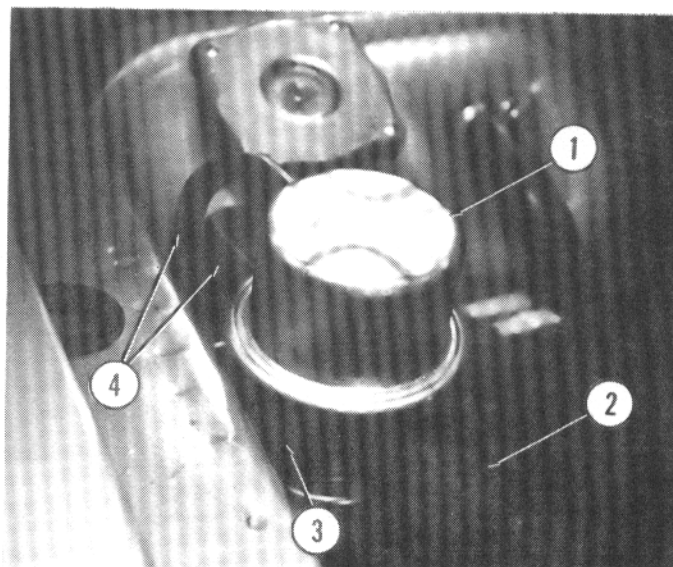
Remove two vacuum hoses (4) from gulp valve (1).

Remove air hose (2) from gulp valve.

Remove nut (3) and washer holding gulp valve to bracket and remove gulp valve.

Installation is reverse of removal.

1. Gulp valve 2. Air hose 3. Nut 4. Vacuum hoses



## EGR VALVE

### REMOVAL AND INSTALLATION

Remove access panel from inside trunk.

Remove three nuts (1), bolt (5) and washers to remove tube (2), spacer (21) and gasket (20). Remove two nuts (4), washer and shield (3). Unscrew fitting (19) to remove tube (6). Remove gasket (7) and seal (18).

Disconnect vacuum line (17) from EGR valve (9).

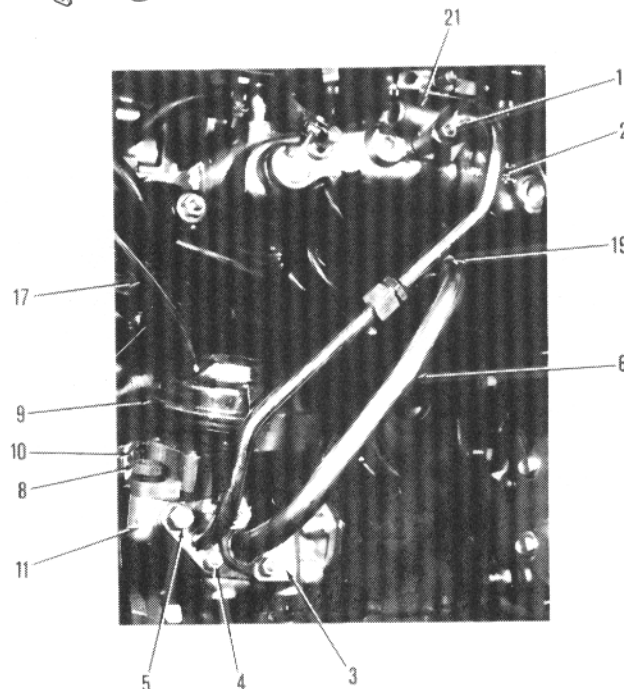
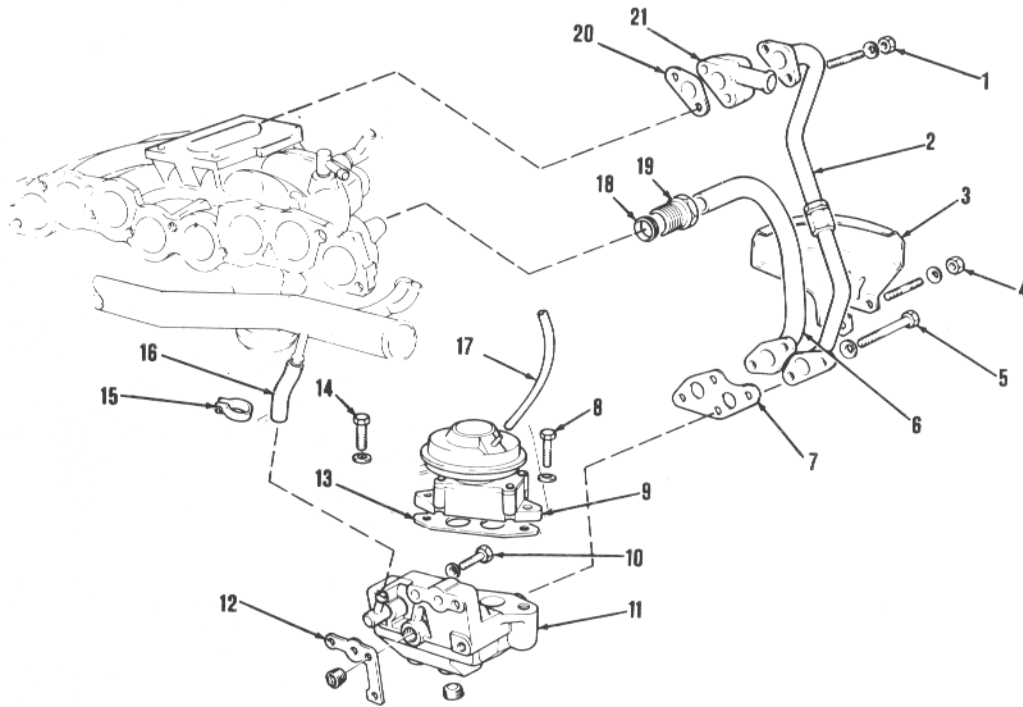
Remove bolts (8 and 14) and washers to remove EGR valve and gasket (13).

Loosen clamp (15) to disconnect water hose (16) from water manifold.

Remove two bolts (10) and washers to remove mounting base (11) and gasket (12).

Installation is reverse of removal. Replace all gaskets.

1. Nut
2. Tube
3. Shield
4. Nut
5. Bolt
6. Tube
7. Gasket
8. Bolt
9. EGR valve
10. Bolt
11. Mounting base
12. Gasket
13. Gasket
14. Bolt
15. Clamp
16. Water hose
17. Vacuum line
18. Seal
19. Fitting
20. Gasket
21. Spacer





## CHECK VALVE OR REED VALVE

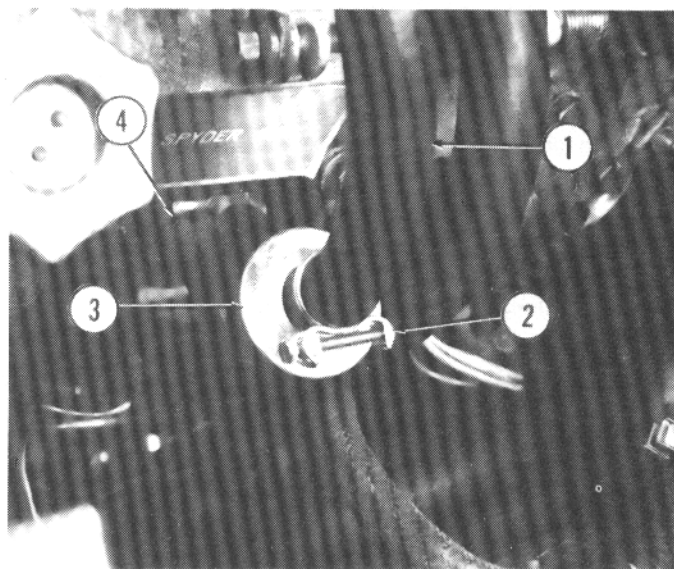
### REMOVAL AND INSTALLATION

Remove clamp (2) holding hose (1) to valve (3).

Loosen locknut (4) and unscrew valve from engine.

Installation is reverse of removal.

1. Hose 2. Clamps 3. Valve 4. Locknut



## CHARCOAL CANISTER

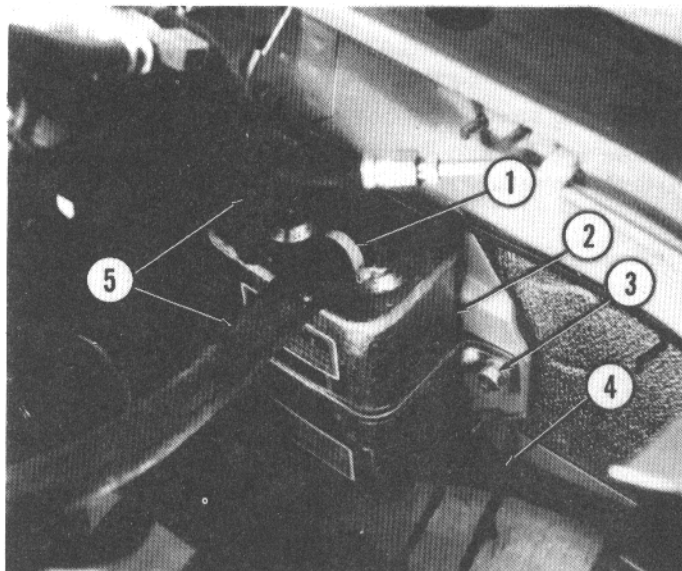
### REMOVAL AND INSTALLATION

Cut off clamps (1) retaining vacuum hoses (4 and 5) to charcoal canister (2).

Remove two nuts (3) and washers holding charcoal canister to bracket and remove canister.

Installation is reverse of removal. Use new clamps on vacuum hoses.

1. Clamp 2. Charcoal canister 3. Nut 4. Vacuum hose  
5. Vacuum hoses



## CATALYTIC CONVERTER

### REMOVAL AND INSTALLATION

(Vehicles With Carburetor)

**WARNING:** Make sure converter has cooled down before working on it.

Straighten lock tabs and remove four nuts (6) and bolts attaching exhaust pipe flange (8) to converter outlet flange (7).

Remove bolt (1) holding support bracket (3) to muffler.

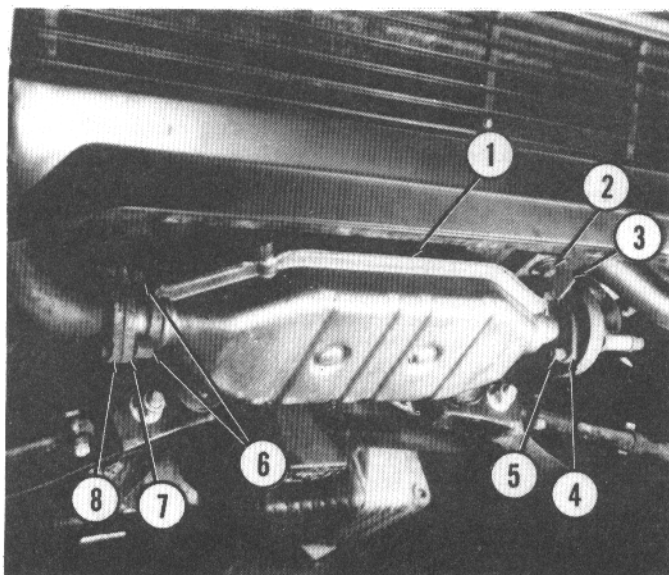
Straighten lock tabs and remove four nuts (5) attaching converter inlet flange (4) to exhaust pipe flange.

Remove support bracket.

Separate exhaust pipe flange and converter outlet flange, then pull converter (1) off of studs and out of vehicle.

Installation is reverse of removal.

1. Catalytic converter 2. Bolt 3. Bracket 4. Inlet flange 5. Nut  
6. Nuts 7. Outlet flange 8. Flange



**REMOVAL AND INSTALLATION**

**(Vehicles With Fuel Injection)**

**WARNING:** Make sure converter has cooled down before working on it.

Straighten lock tabs and remove four nuts (1) and bolts attaching exhaust pipe flange (2) to converter inlet flange (3).

Remove two bolts (5) holding exhaust system bracket (6) to transmission bracket (4).

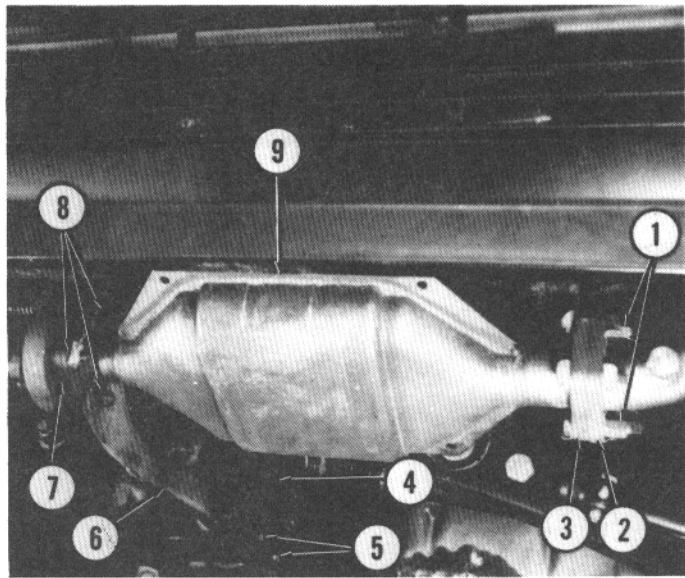
Straighten lock tabs and remove four nuts (8) attaching converter outlet flange (7) to exhaust pipe flange.

Remove exhaust system bracket.

Maneuver converter (9) off of studs and out of vehicle.

Installation is reverse of removal.

- 1. Nuts 2. Exhaust pipe flange 3. Converter inlet flange
- 4. Transmission bracket 5. Bolts 6. Bracket 7. Outlet flange
- 8. Nuts 9. Catalytic converter



**EXHAUST SYSTEM**

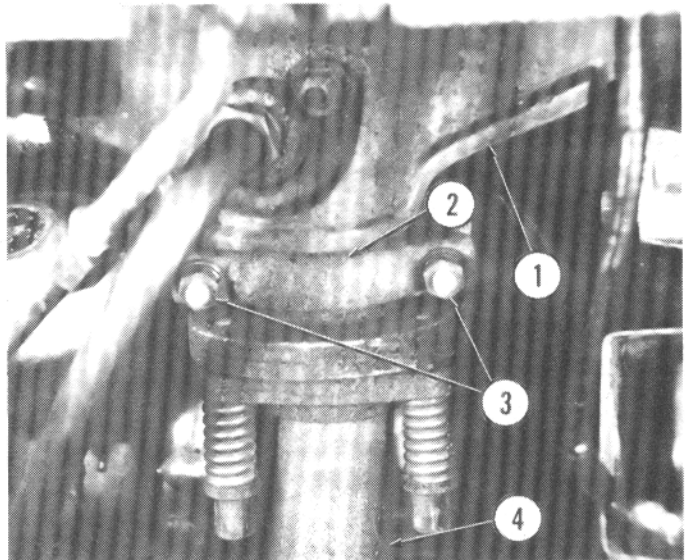
**REMOVAL AND INSTALLATION**

**(Vehicles With Carburetor)**

Remove rear access panel from inside trunk.

Remove two nuts (3) and clamp (2) attaching exhaust pipe (4) to manifold (1).

- 1. Exhaust manifold 2. Clamp 3. Nuts 4. Exhaust pipe



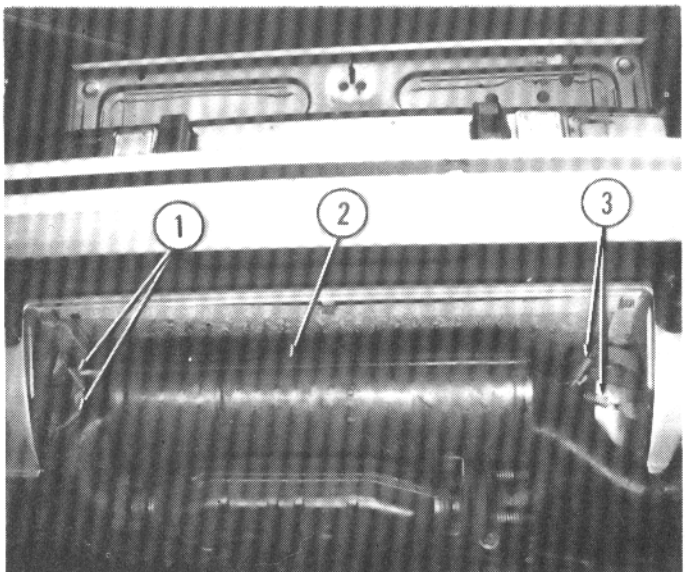
Raise and support rear of vehicle.

Remove six screws and four bolts retaining rear grille assembly and remove grille assembly.

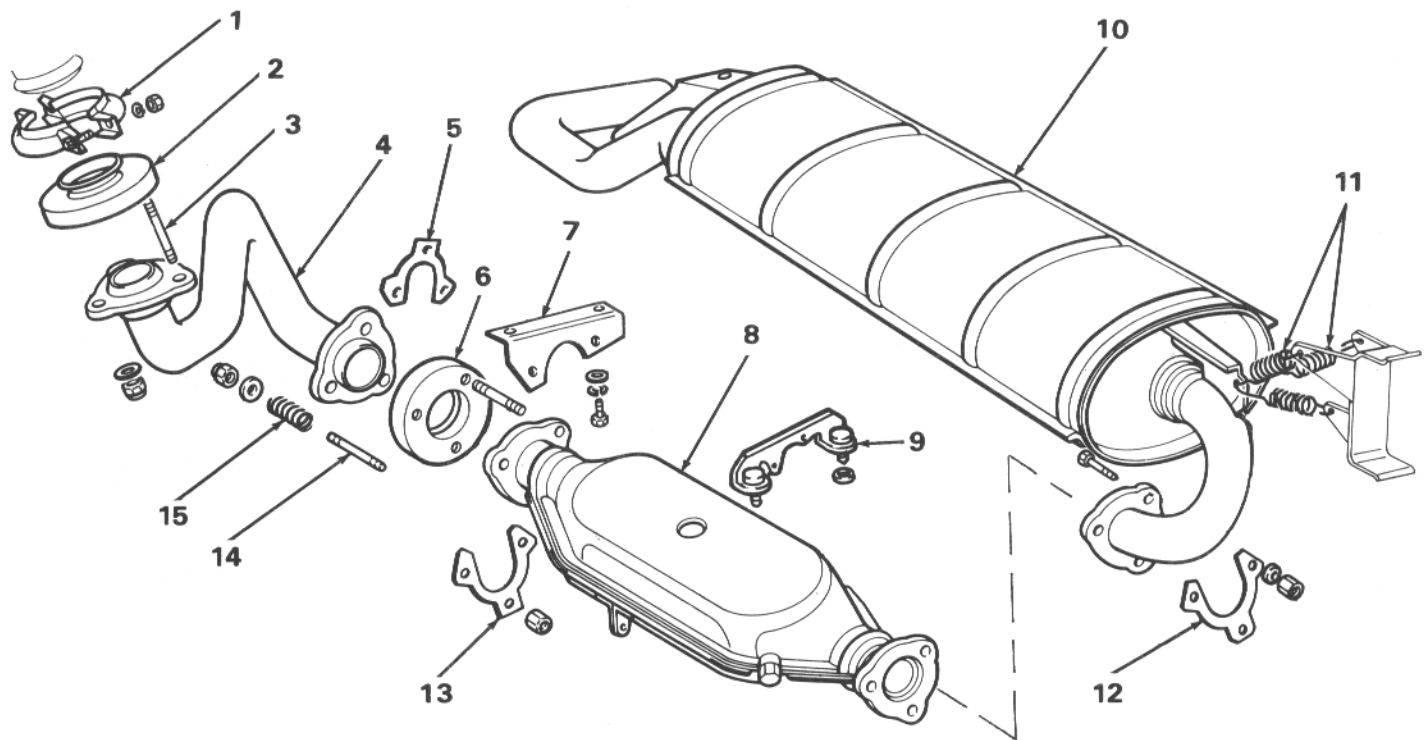
Disconnect six springs (1 and 3) supporting muffler (2) and lower complete exhaust system out vehicle.

Installation is reverse of removal.

- 1. Springs 2. Muffler 3. Springs







- 1. Clamp
- 2. Flange
- 3. Stud
- 4. Exhaust pipe
- 5. Locking ring

- 6. Flange
- 7. Bracket
- 8. Catalytic converter
- 9. Bracket
- 10. Muffer assembly

- 11. Springs
- 12. Locking ring
- 13. Locking ring
- 14. Stud
- 15. Spring

## EXPLODED VIEW OF EXHAUST SYSTEM (VEHICLES WITH CARBURETOR)

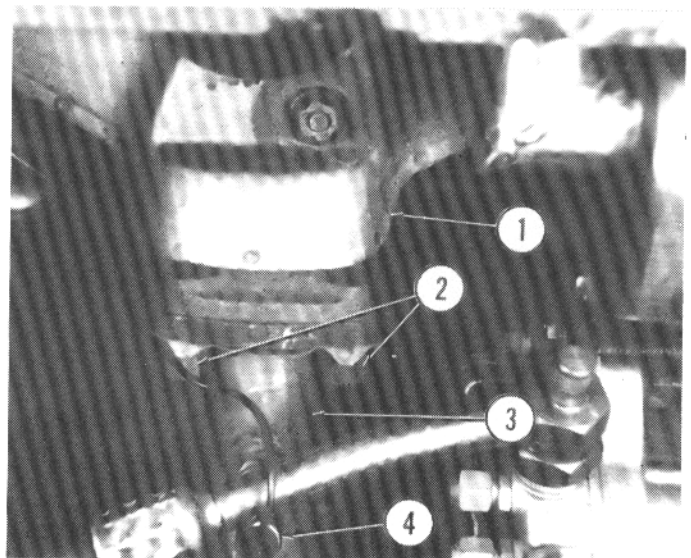
### REMOVAL AND INSTALLATION (Vehicles With Fuel Injection)

From inside trunk, remove floor mat, insulation panel, and access panel.

Unplug Lambda sensor connector and remove Lambda sensor (4) from exhaust pipe (3).

Remove three nuts (2) attaching exhaust pipe to manifold (1).

- 1. Exhaust manifold
- 2. Nuts
- 3. Exhaust pipe
- 4. Lambda sensor



Raise and support rear of vehicle.

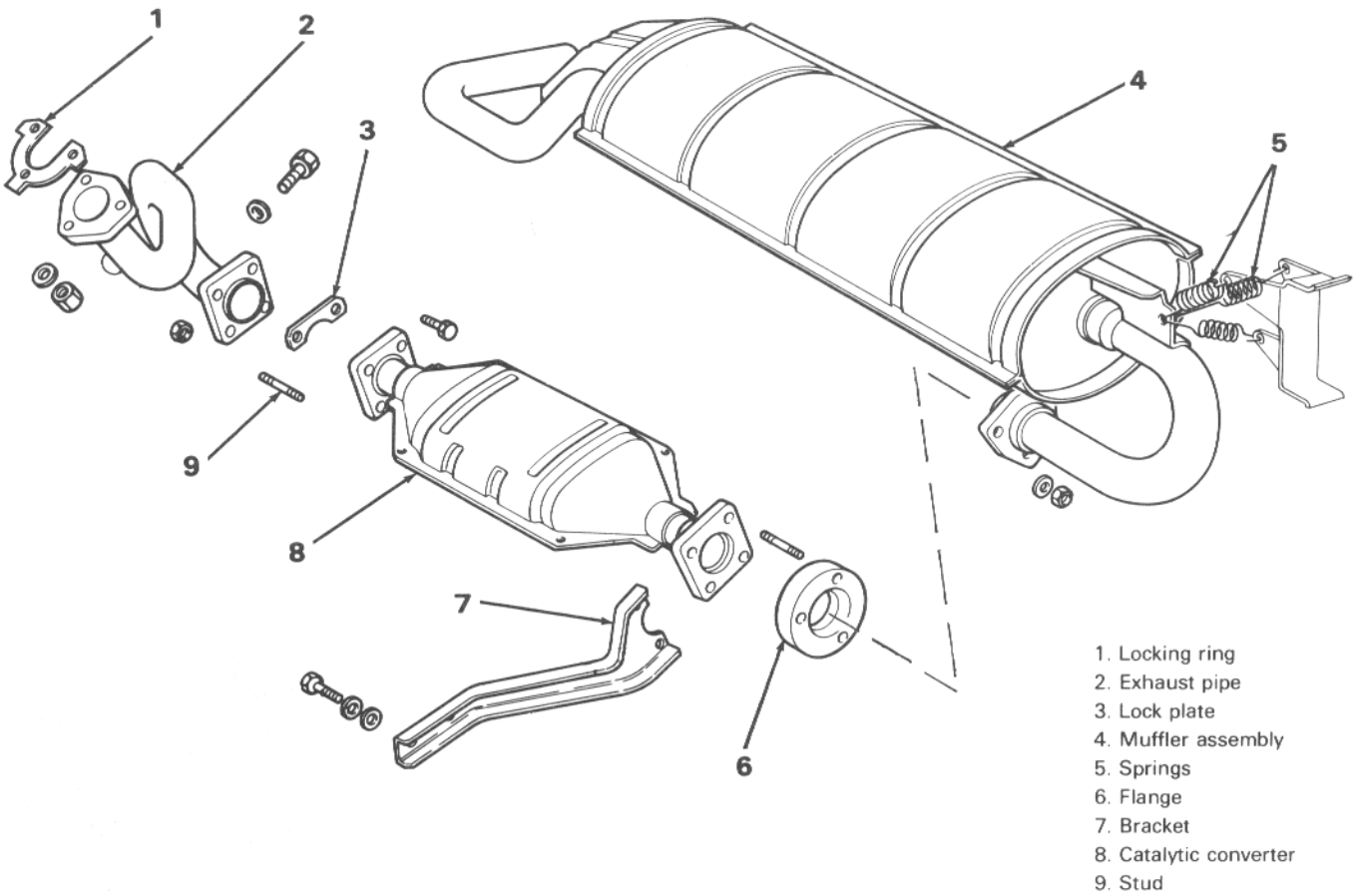
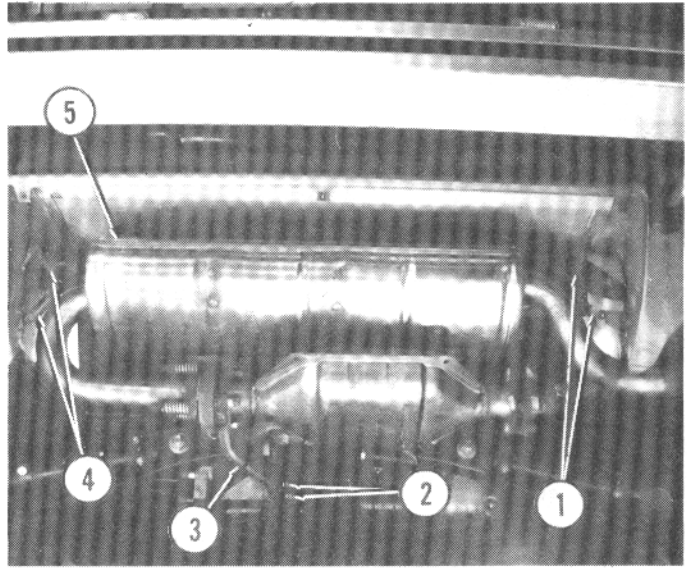
Remove six screws and four bolts retaining rear grille assembly, and remove assembly.

Remove two bolts (2) holding exhaust system support bracket (3) to transmission bracket.

Disconnect six springs (1 and 4) supporting muffler (5) and lower complete exhaust system out from vehicle.

Installation is reverse of removal.

1. Springs 2. Bolts 3. Support 4. Springs 5. Muffler



- 1. Locking ring
- 2. Exhaust pipe
- 3. Lock plate
- 4. Muffler assembly
- 5. Springs
- 6. Flange
- 7. Bracket
- 8. Catalytic converter
- 9. Stud

**EXPLODED VIEW OF EXHAUST SYSTEM  
(VEHICLES WITH FUEL INJECTION)**