

FUEL PUMP

REMOVAL AND INSTALLATION (Vehicles With Carburetor)

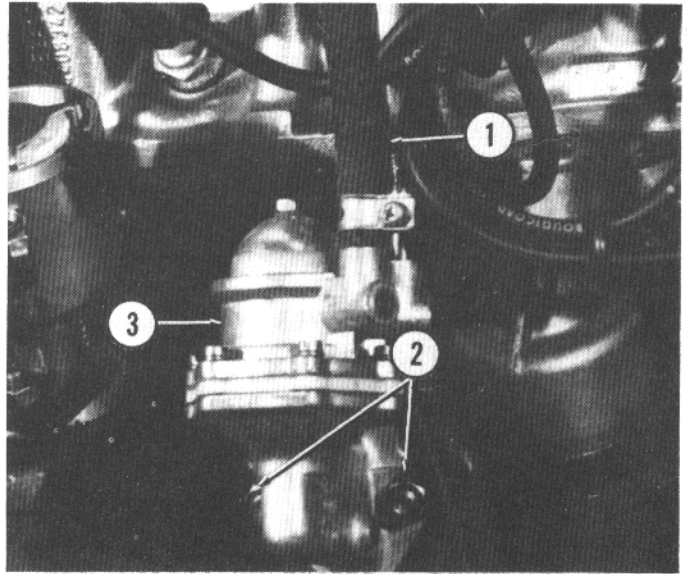
Disconnect and plug fuel hoses (1).

Remove two nuts (2) and washers holding fuel pump (3) to engine.

Remove fuel pump, two gaskets and insulating support.

Installation is reverse of removal.

1. Fuel hose 2. Nuts 3. Fuel pump



INSPECTION

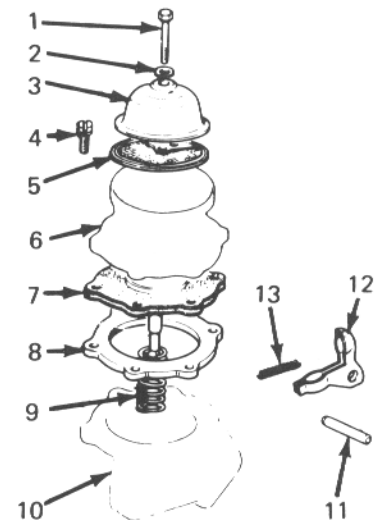
Check attachment screws (4) of upper and lower bodies and cover screw (1) for tightness.

Ensure fuel hoses and filter are not deteriorated or clogged and that diaphragm is not hardened or cracked.

Check for weakness or distortion of control lever and diaphragm springs.

When assembling, coat control lever and pivot with oil. Use new gaskets lightly coated with grease.

1. Cover screw 2. Lockwasher 3. Cover 4. Screw 5. Filter
6. Upper body 7. Diaphragm 8. Spacer 9. Spring 10. Lower body
11. Pivot pin 12. Control lever 13. Spring



ADJUSTMENT

Place outer gasket (2) and insulating support (4) on engine. Place a .012 in. (.3 mm) gasket on support. Install rod (5) in engine.

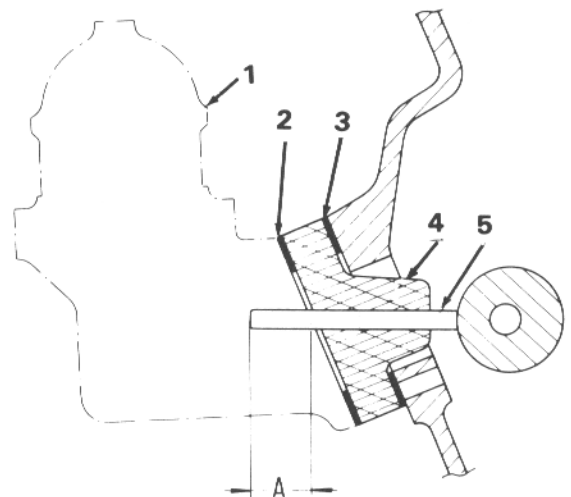
Check that dimension A is .59-.61 in. (15-15.5 mm). Install a thicker or thinner gasket to meet this dimension.

After adjusting the dimension, place inner gasket (3), insulating support and outer gasket on engine.

Install rod (5) in engine, and install fuel pump (1).

NOTE: Gaskets (3) are supplied in .12, .027, and .047 in. (.3, .7, and 1.2 mm) thicknesses.

1. Fuel pump 2. Gasket 3. Gasket 4. Insulating support 5. Rod



REMOVAL AND INSTALLATION (Vehicles With Fuel Injection)

CAUTION: Relieve fuel system pressure before disconnecting fuel hoses. Refer to RELIEVING FUEL PRESSURE in Section 102.26.

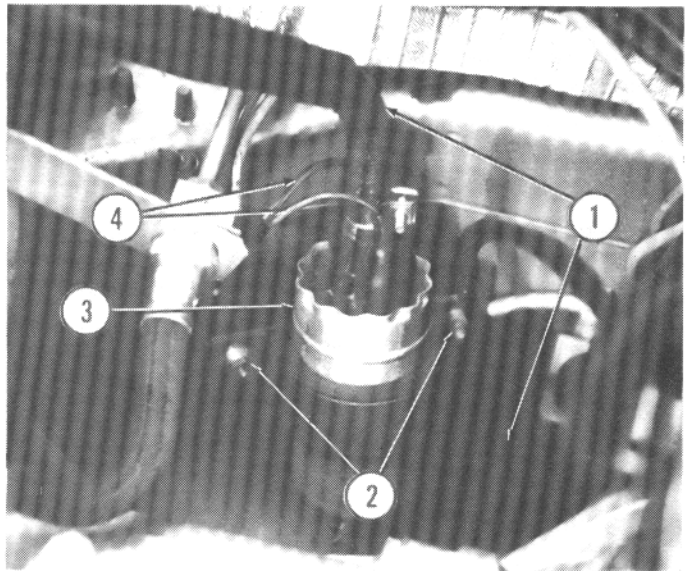
Raise and support rear of vehicle.

Remove panel protecting fuel pump.

Disconnect and plug fuel hoses (1). Disconnect electrical leads (4) from fuel pump (3).

Remove two nuts (2) retaining fuel pump and remove pump. Installation is reverse of removal.

1. Fuel hoses 2. Nuts 3. Fuel pump 4. Electrical leads



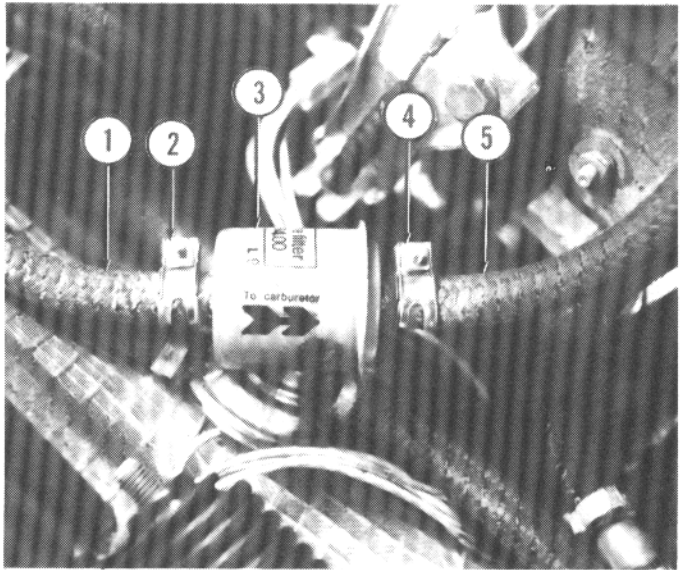
FUEL FILTER

REMOVAL AND INSTALLATION (Vehicles with Carburetor)

Disconnect fuel inlet (1) and outlet (5) hoses from filter by removing clamps (2 and 4) and pulling hoses off filter (3).

Install new filter with arrow on filter pointing in direction of fuel flow to carburetor.

1. Fuel inlet hose 2. Clamp 3. Fuel filter 4. Clamp
5. Fuel outlet hose



REMOVAL AND INSTALLATION (Vehicles With Fuel Injection)

CAUTION: Relieve fuel system pressure before disconnecting fuel hoses. Refer to RELIEVING FUEL PRESSURE in Section 102.26.

Disconnect fuel inlet (3) and outlet (5) hoses from filter by removing clamps (1) and pulling hoses off filter (2).

Remove two nuts (4) holding fuel filter to body, and remove fuel filter.

Installation is reverse of removal.

1. Clamp 2. Fuel filter 3. Fuel inlet hose 4. Nut 5. Fuel outlet hose

