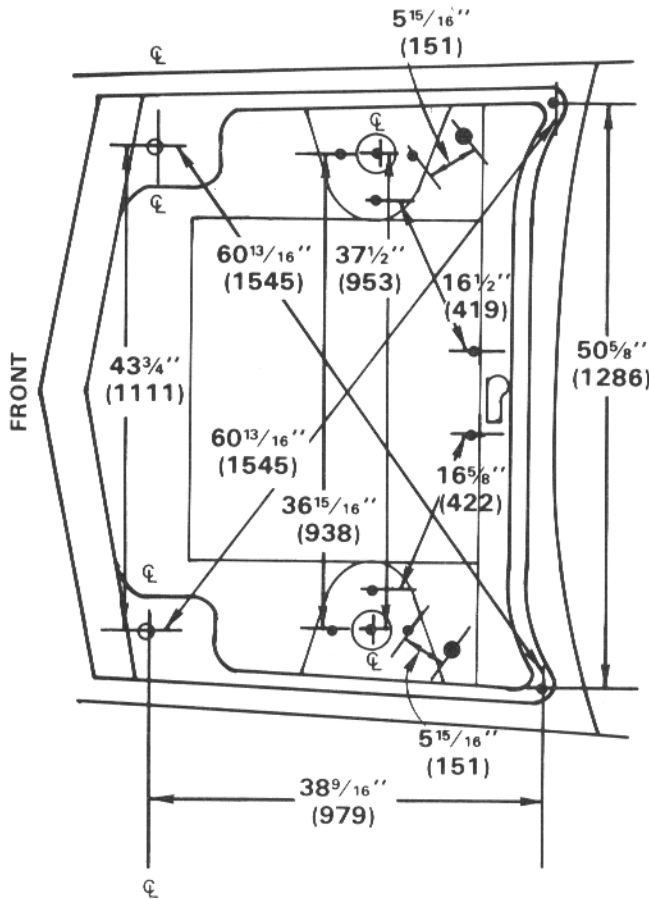
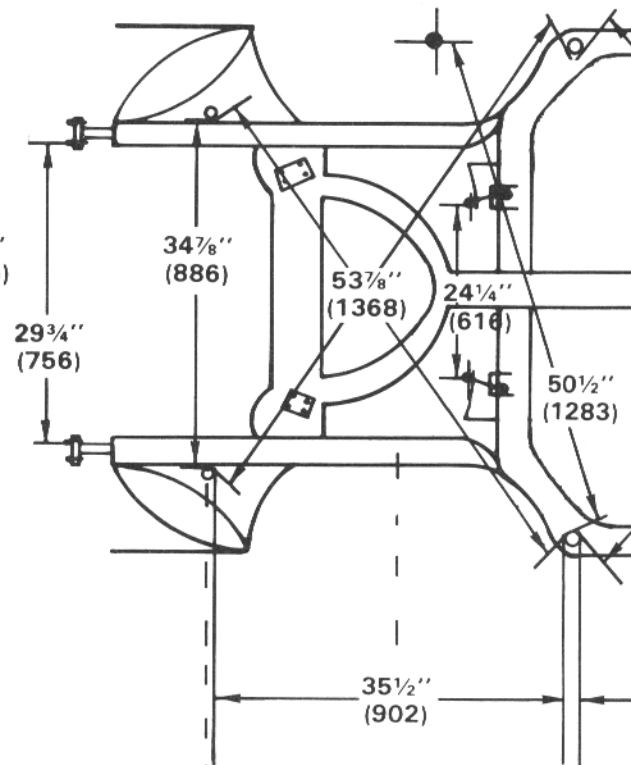


**FRONT LUGGAGE COMPARTMENT  
TOP VIEW**



**DRIVER'S SIDE**



**MEASUREMENTS**

All measurements are given in inches and millimeters.

**Measurement Points**

Bolts, nuts and plugs are measured from the center of the unit and are shown on the illustration as a solid dot.  $\bullet$

Holes are measured from the closest edge to the other point of the measurement. Holes are shown as outlines only.  $\square$

The symbol  $\phi$  next to a hole indicates that the measurement is taken from the center of that hole.

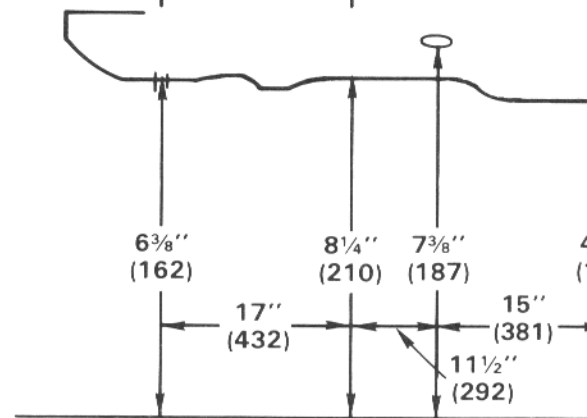
**Top and Bottom View Measurements**

All dimensions are point-to-point, closest distance between the points of measurement.

**Datum Measurements**

Datum measurements provide a fixed reference point for all vertical measurements. Measurements along the datum line are not point-to-point. The measurements must always be made parallel to the datum line.

Dimensions provided courtesy of KLM Inc. for the exclusive use of Fiat Motors of North America.

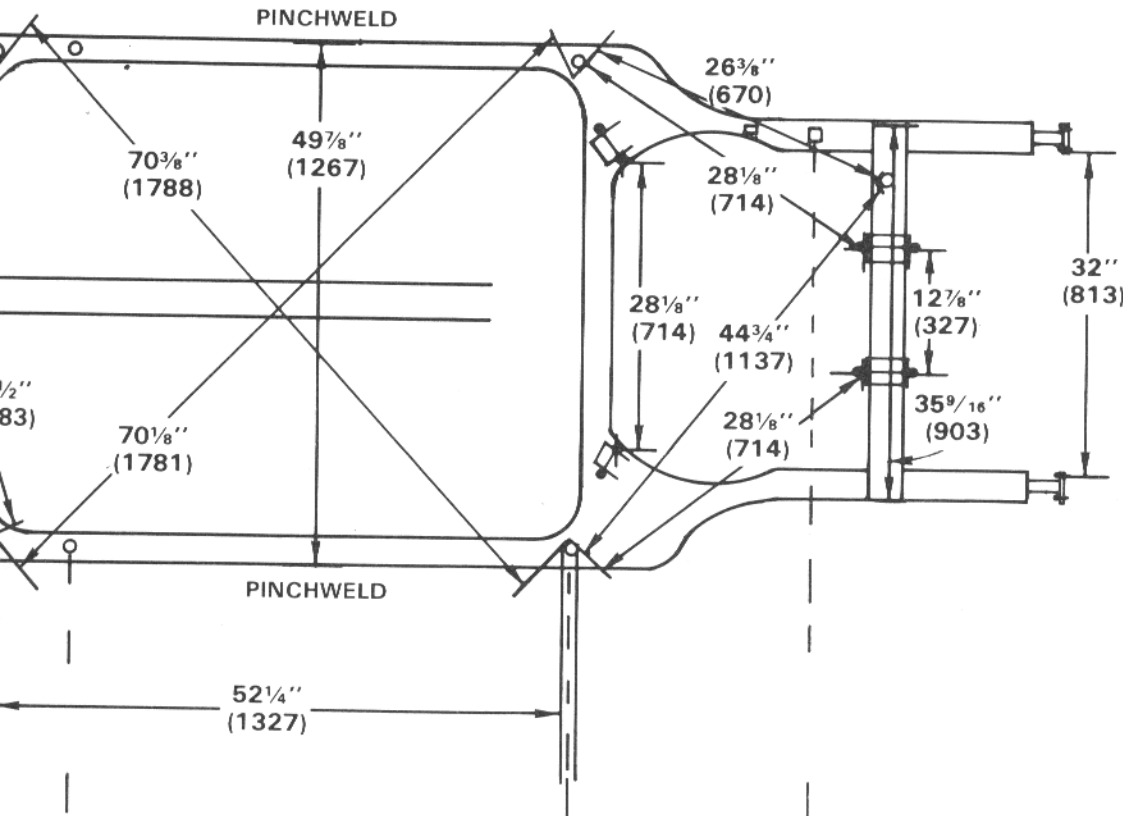


# Internal and External Bodywork

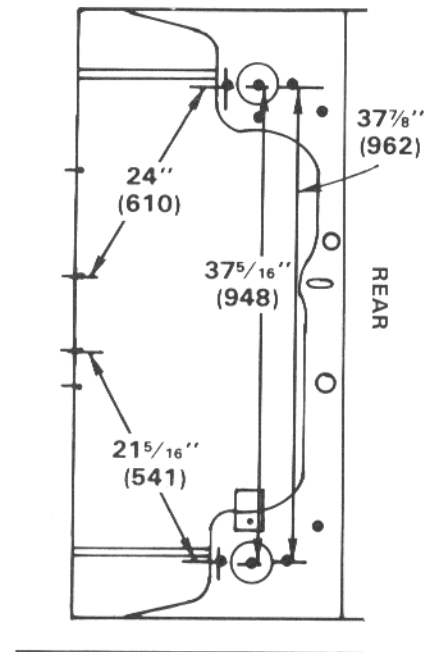
701.11/17

Page 70-7/8

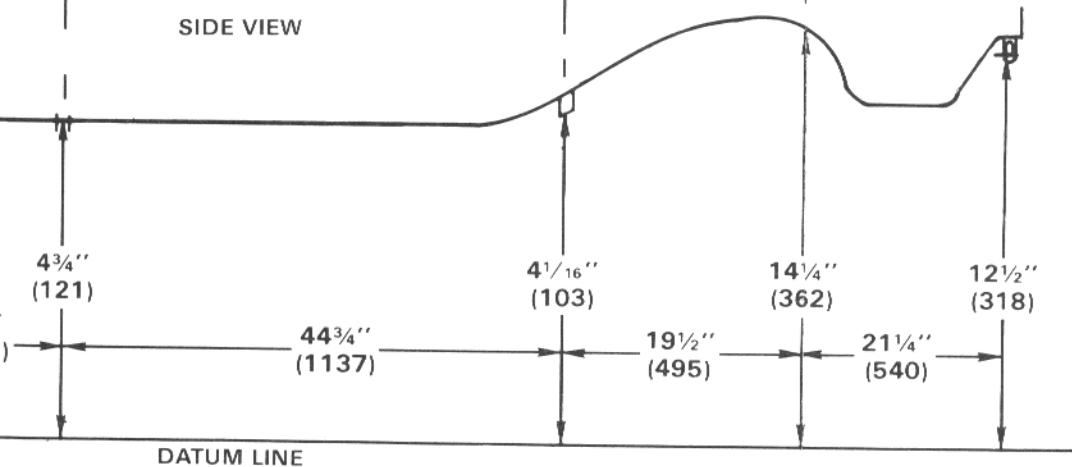
BOTTOM VIEW



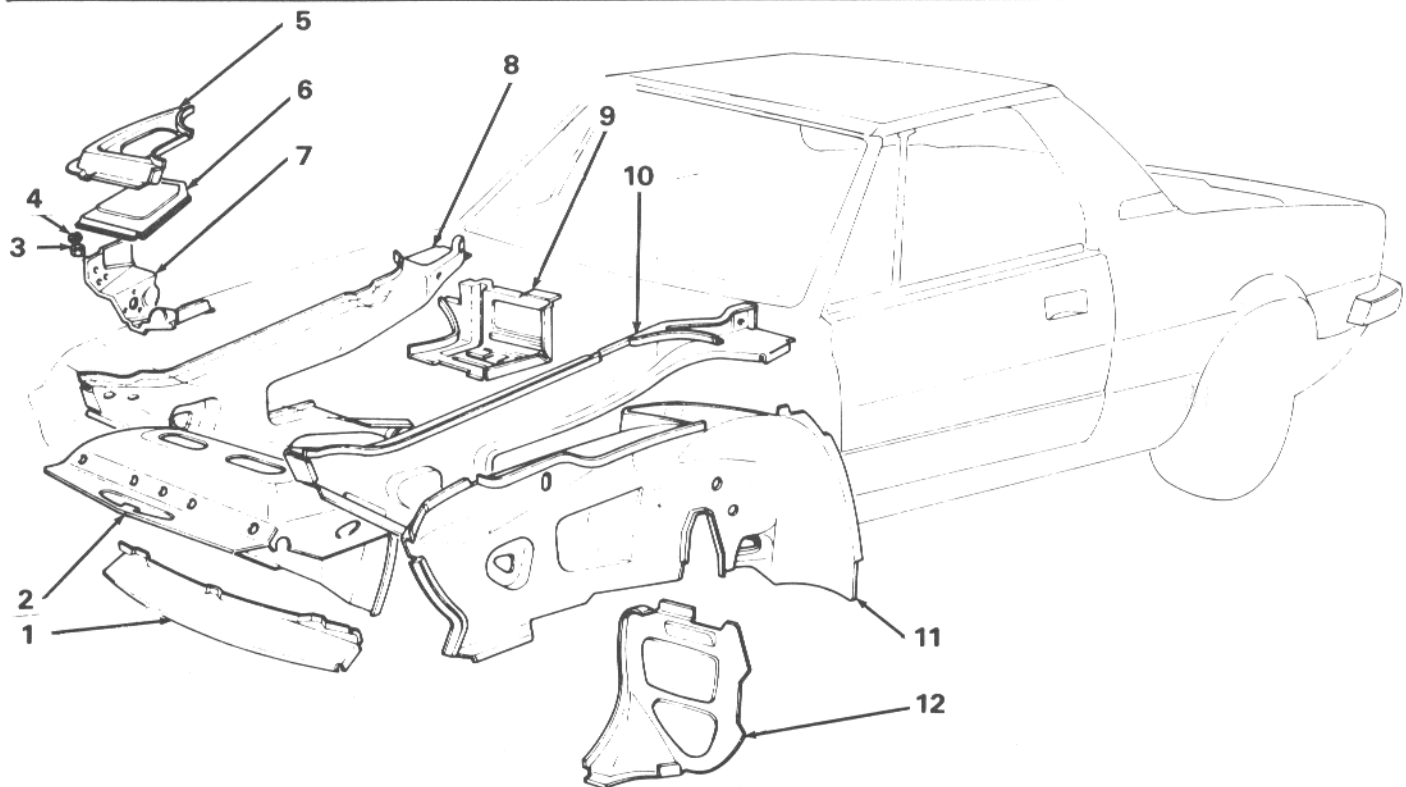
ENGINE COMPARTMENT TOP VIEW



SIDE VIEW



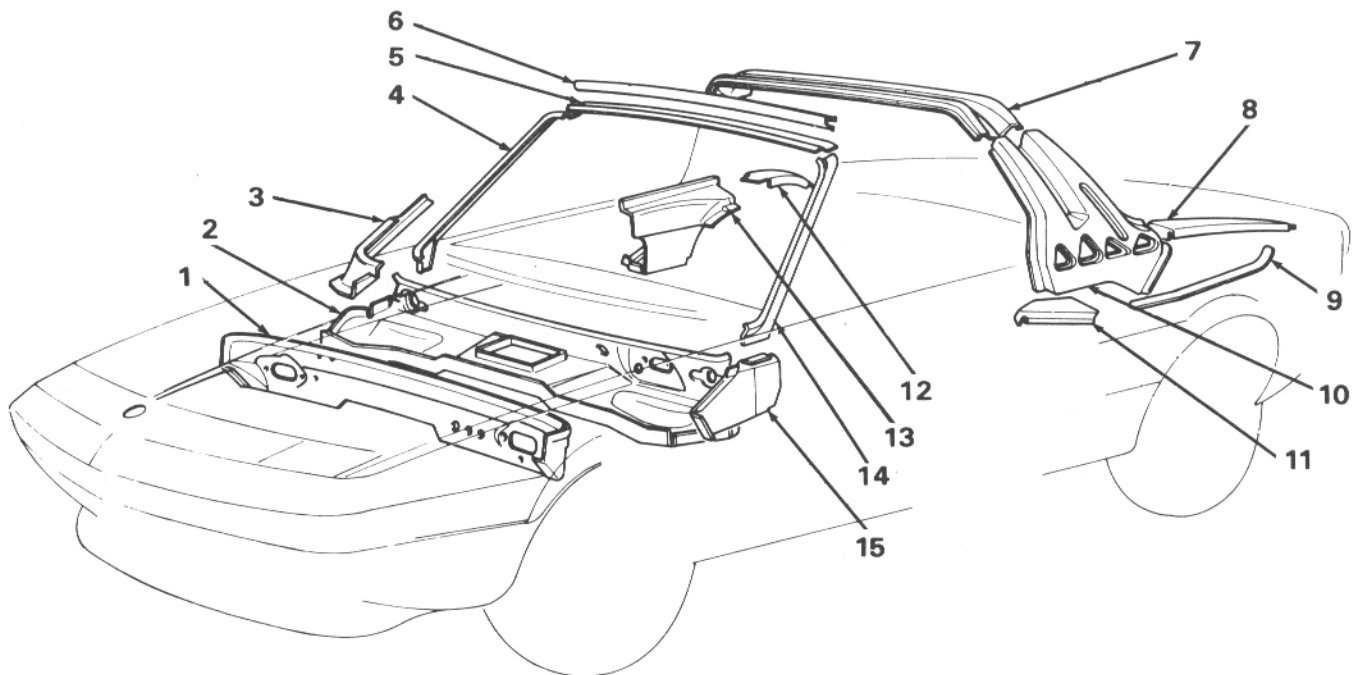
UNDERBODY DIMENSIONS



- 1. Crossrail
- 2. Wall
- 3. Nut
- 4. Lockwasher

- 5. Joining element
- 6. Cover
- 7. Bracket
- 8. Framing

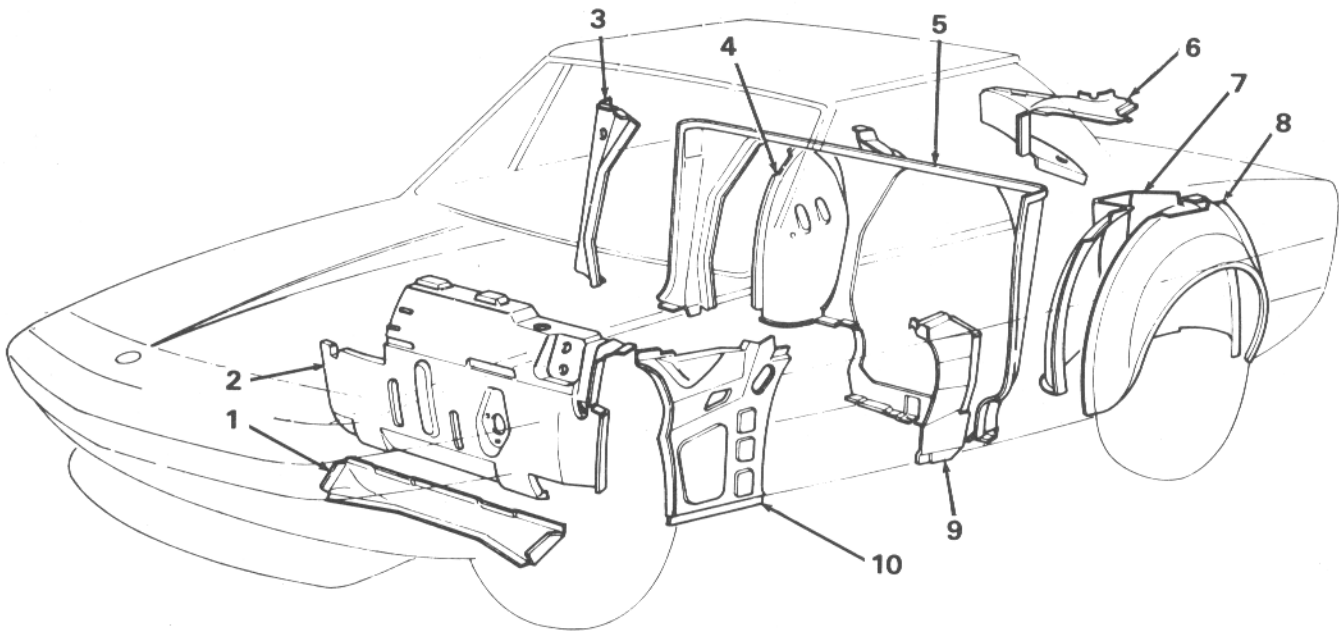
- 9. Battery seat
- 10. Framing
- 11. Side panel
- 12. Wall



- 1. Air intake wall
- 2. Air intake case
- 3. Reinforcement
- 4. Framing
- 5. Windshield framing

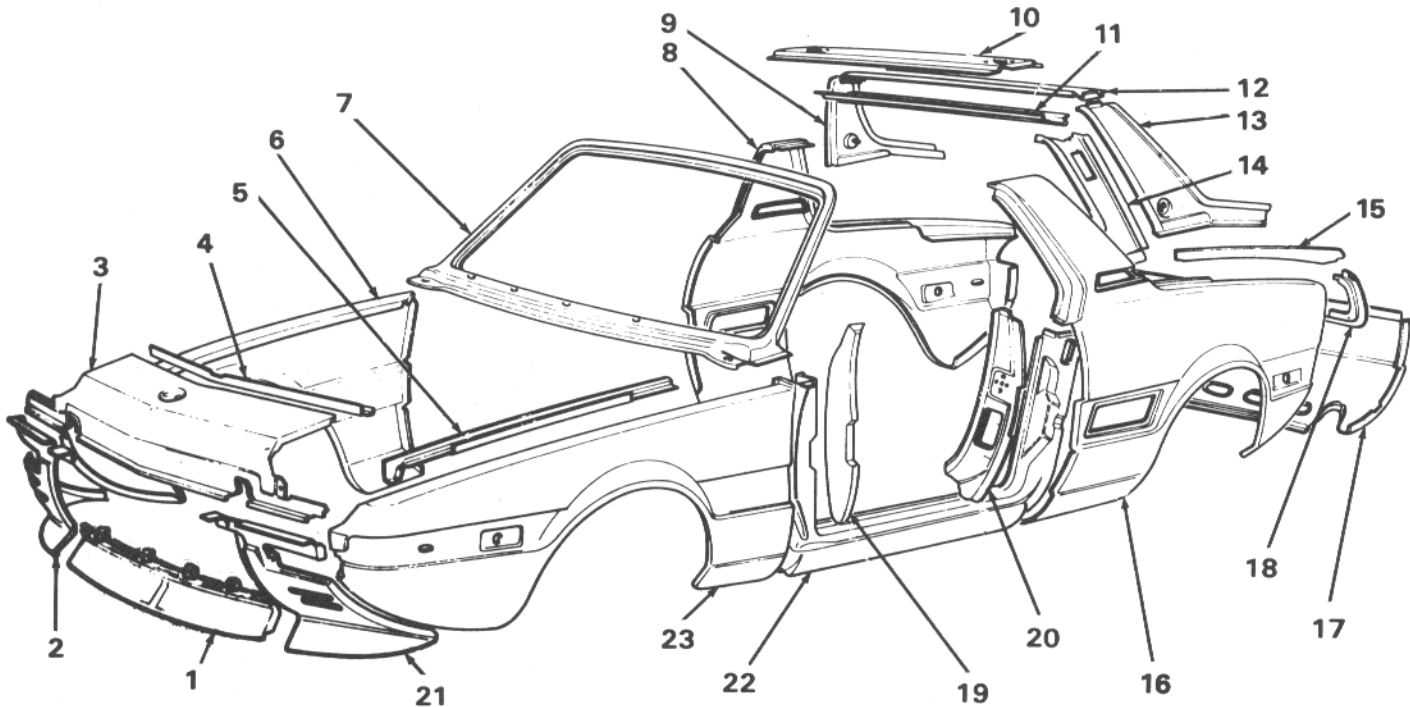
- 6. Joining element
- 7. Framing
- 8. Joining element
- 9. Reinforcement
- 10. Framing

- 11. Reinforcement
- 12. Reinforcement
- 13. Reinforcement
- 14. Framing
- 15. Joining element



- |                    |                    |                  |                |
|--------------------|--------------------|------------------|----------------|
| 1. Boxed panel     | 4. Side panel      | 7. Side panel    | 10. Side panel |
| 2. Wall            | 5. Wall            | 8. Wheel well    |                |
| 3. Joining element | 6. Joining element | 9. Reinforcement |                |

**BODY SHELL INNER COMPONENTS**



- |                 |                     |                  |                     |                        |
|-----------------|---------------------|------------------|---------------------|------------------------|
| 1. Panel        | 6. Panel            | 11. Panel        | 16. Panel           | 21. Panel              |
| 2. Panel        | 7. Windshield panel | 12. Panel        | 17. Panel           | 22. Door opening panel |
| 3. Panel        | 8. Panel            | 13. Panel        | 18. Seat            | 23. Panel              |
| 4. Channel      | 9. Panel            | 14. Panel        | 19. Joining element |                        |
| 5. Hood channel | 10. Panel           | 15. Hood channel | 20. Joining element |                        |

**BODY SHELL OUTER COMPONENTS**

# Hard Top

701.25

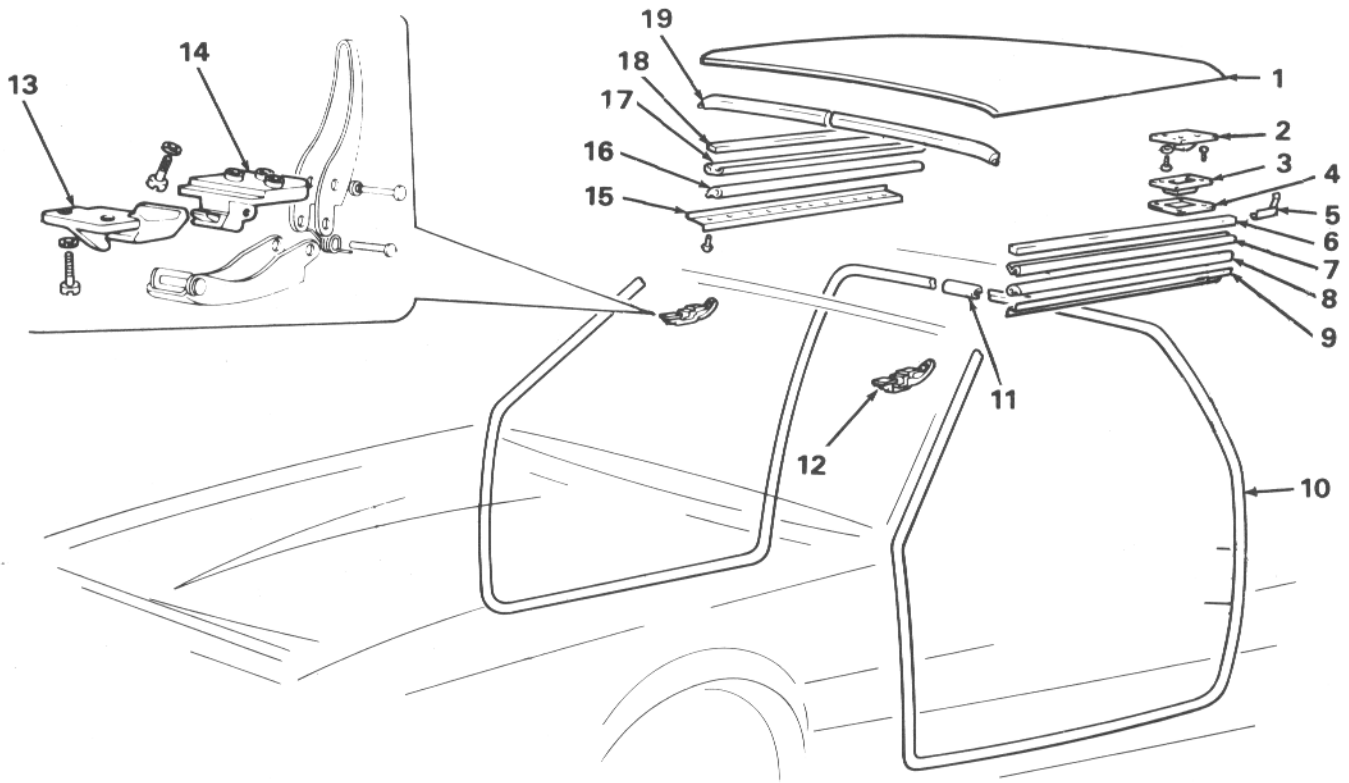
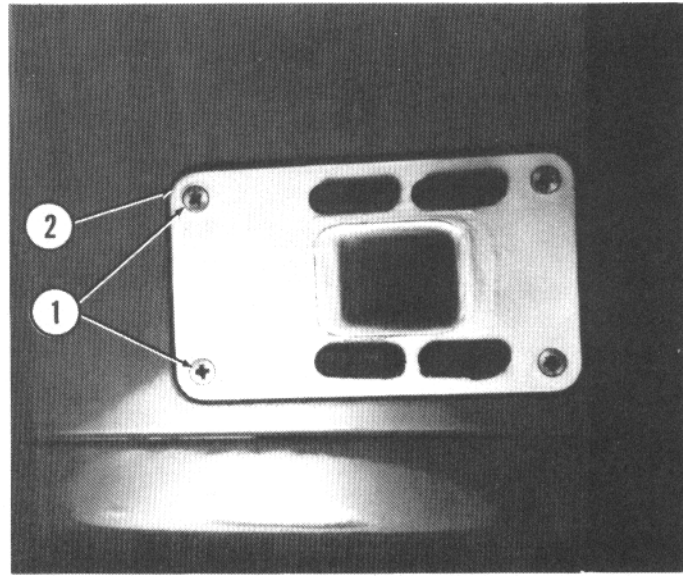
Page 70-11/12

## ADJUSTMENT

Adjust hard top for proper alignment by loosening four screws (1) holding striker plate (2).

Shift plate as necessary for proper adjustment.

1. Screws 2. Striker plate



- 1. Hard top
- 2. Lug
- 3. Striker plate
- 4. Cover
- 5. End plate
- 6. Channel
- 7. Weatherstrip

- 8. Weatherstrip
- 9. Molding
- 10. Weatherstrip
- 11. Coupling
- 12. Latch
- 13. Striker plate

- 14. Support
- 15. Molding
- 16. Weatherstrip
- 17. Weatherstrip
- 18. Channel
- 19. Weatherstrip

## EXPLODED VIEW OF HARD TOP COMPONENTS

# Doors-Door Glass-Lock Mechanism

701  
27/30/31

Page 70-13

## DOOR PANEL

### REMOVAL AND INSTALLATION

Pry out plug (1) in top of arm rest (2).

Remove three screws holding arm rest to door and remove arm rest.

Unscrew lock button (3).

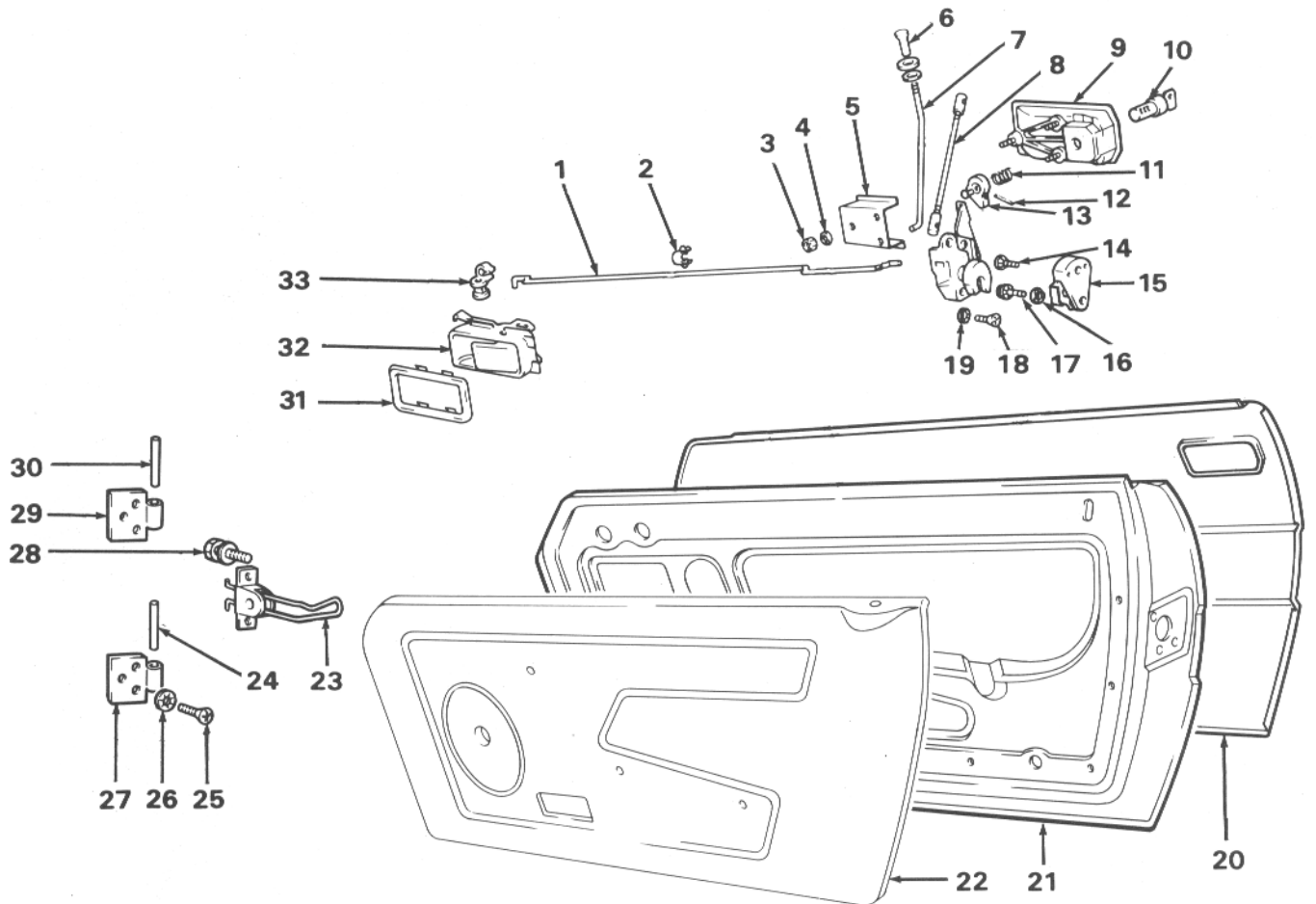
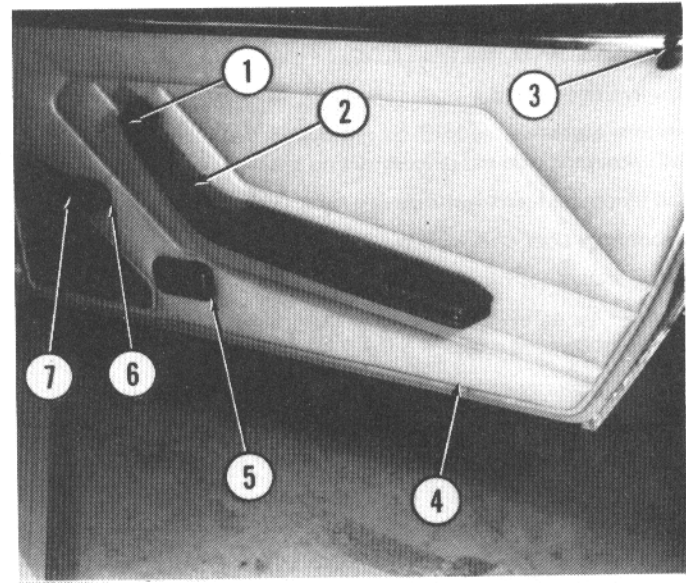
Pry back cover (6) and remove clip on window crank. Remove window crank (7).

Remove door handle trim ring (5) by pushing toward rear of vehicle and pulling out.

Carefully pry door panel (4) off door.

Install in reverse order.

1. Plug 2. Arm rest 3. Lock button 4. Door panel 5. Trim ring  
6. Cover 7. Window crank



- |                |                    |                |                |                 |
|----------------|--------------------|----------------|----------------|-----------------|
| 1. Latch rod   | 8. Tie rod         | 15. Latch      | 22. Door panel | 28. Bolt        |
| 2. Clip        | 9. Handle assembly | 16. Washer     | 23. Door stay  | 29. Hinge       |
| 3. Nut         | 10. Lock cylinder  | 17. Screw      | 24. Hinge pin  | 30. Hinge pin   |
| 4. Washer      | 11. Spring         | 18. Screw      | 25. Screw      | 31. Trim ring   |
| 5. Bracket     | 12. Pin            | 19. Lockwasher | 26. Lockwasher | 32. Door handle |
| 6. Lock button | 13. Pawl           | 20. Outer skin | 27. Hinge      | 33. Clip        |
| 7. Lock rod    | 14. Screw          | 21. Door       |                |                 |

EXPLODED VIEW OF DOOR

## DOOR

### REMOVAL AND INSTALLATION

Remove door panel.

Remove electrical leads (5) by removing clip (1) and, on vehicles with power windows, disconnecting leads from motor.

Pull electrical leads out through hole in door.

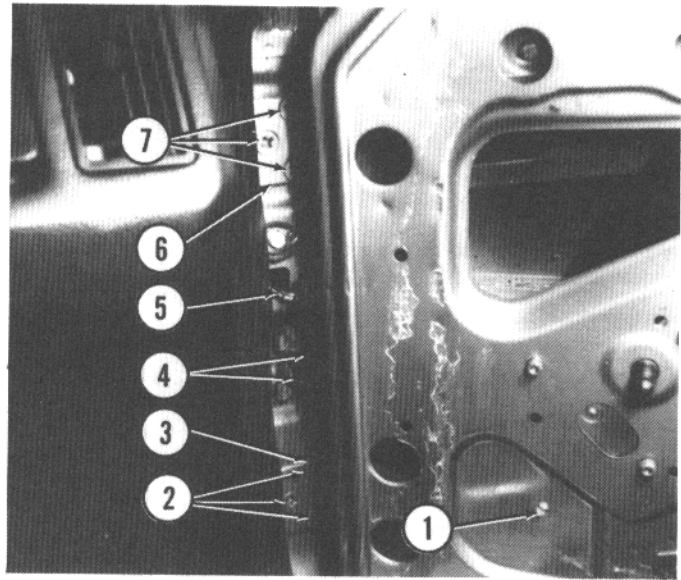
Disconnect door check (4) by squeezing rods together.

Scribe marks for hinge location.

Remove six screws (2 and 7) holding hinges (3 and 6) to door jamb and remove door.

Install in reverse order.

1. Clip 2. Screws 3. Hinge 4. Door check 5. Electrical leads  
6. Hinge 7. Screws



## DOOR LATCH

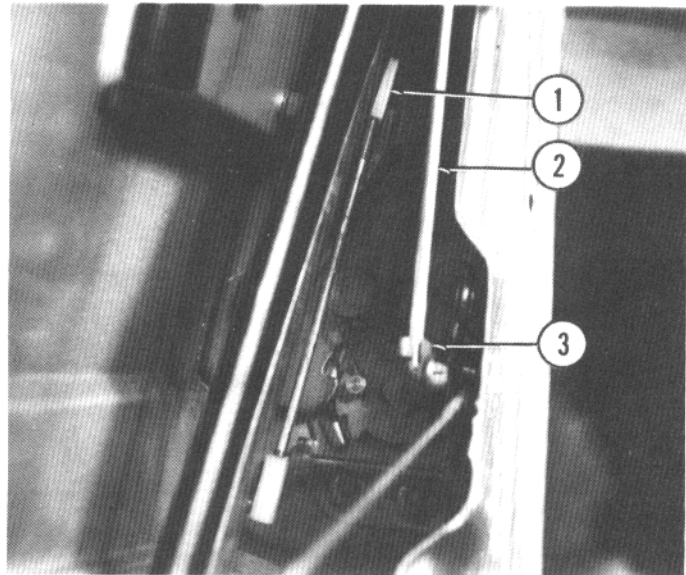
### REMOVAL AND INSTALLATION

Remove door panel.

Disconnect lock rod (2) from plastic clip (3) and remove rod.

Disconnect adjustable head (1) from handle assembly.

1. Adjustable head 2. Lock rod 3. Clip



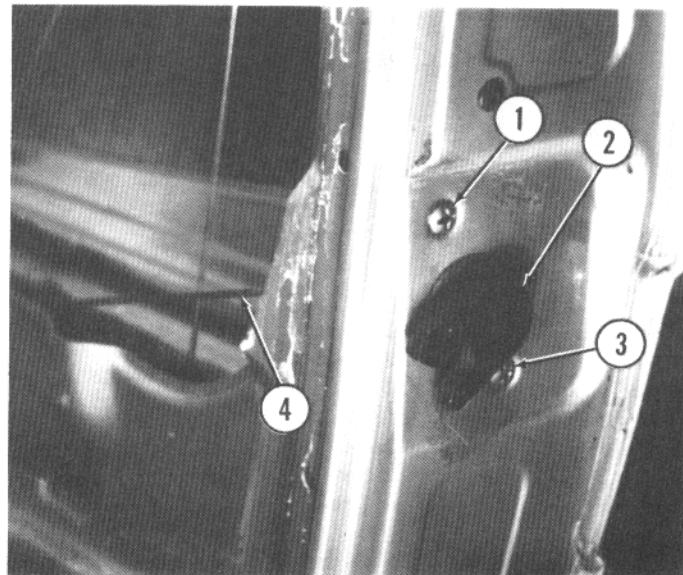
Remove three screws (1 and 3) holding latch (2) to door.

Tilt latch until latch rod (4) can be disconnected from latch.

Maneuver latch out of door.

Install in reverse order. Adjust door handle.

1. Screw 2. Latch 3. Screw 4. Latch rod





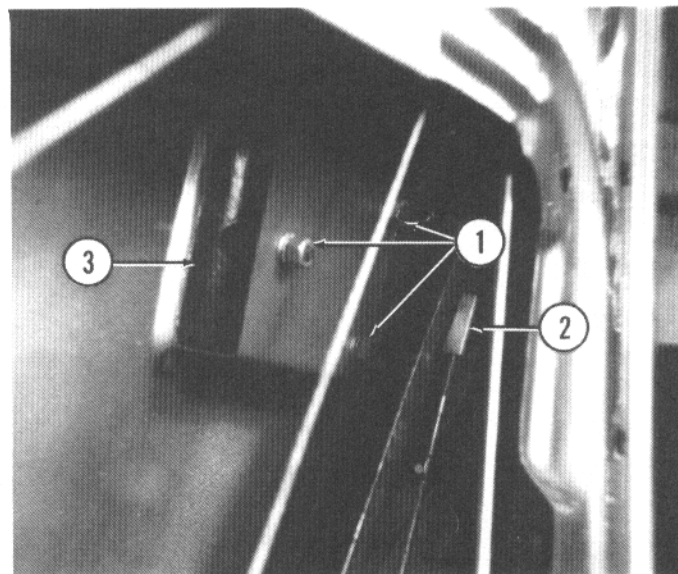
## HANDLE AND LOCK CYLINDER REMOVAL AND INSTALLATION

Disconnect adjustable head (2) from handle assembly (3).

Remove three nuts (1) holding handle assembly to door and remove handle assembly.

Install in reverse order. Adjust handle.

1. Nuts 2. Adjustable head 3. Handle assembly

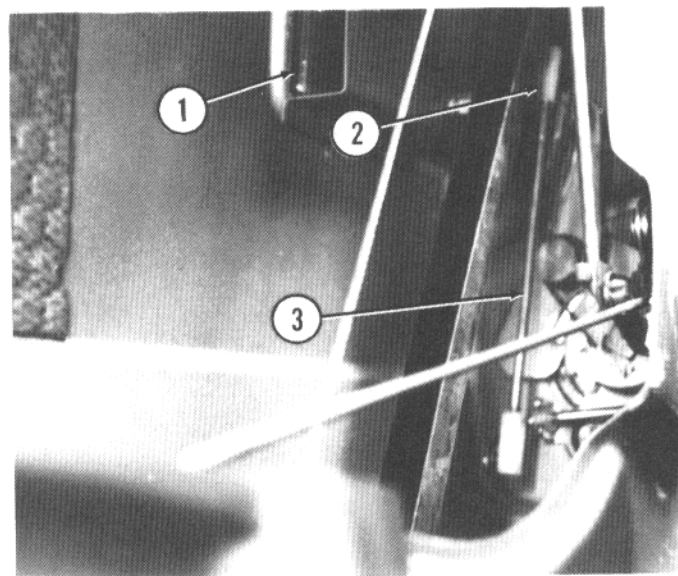


## ADJUSTMENT

Disconnect adjustable head (2) from handle assembly (1).

Turn head on tie rod (3) until proper length is obtained.

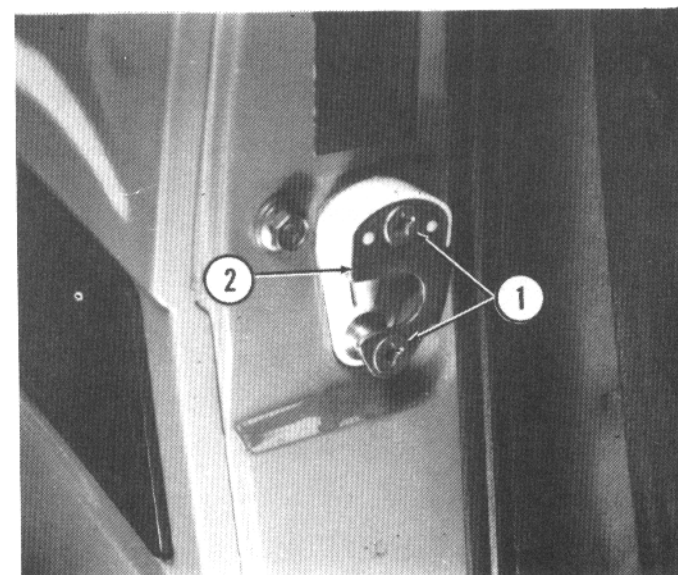
1. Handle assembly 2. Adjustable head 3. Tie rod



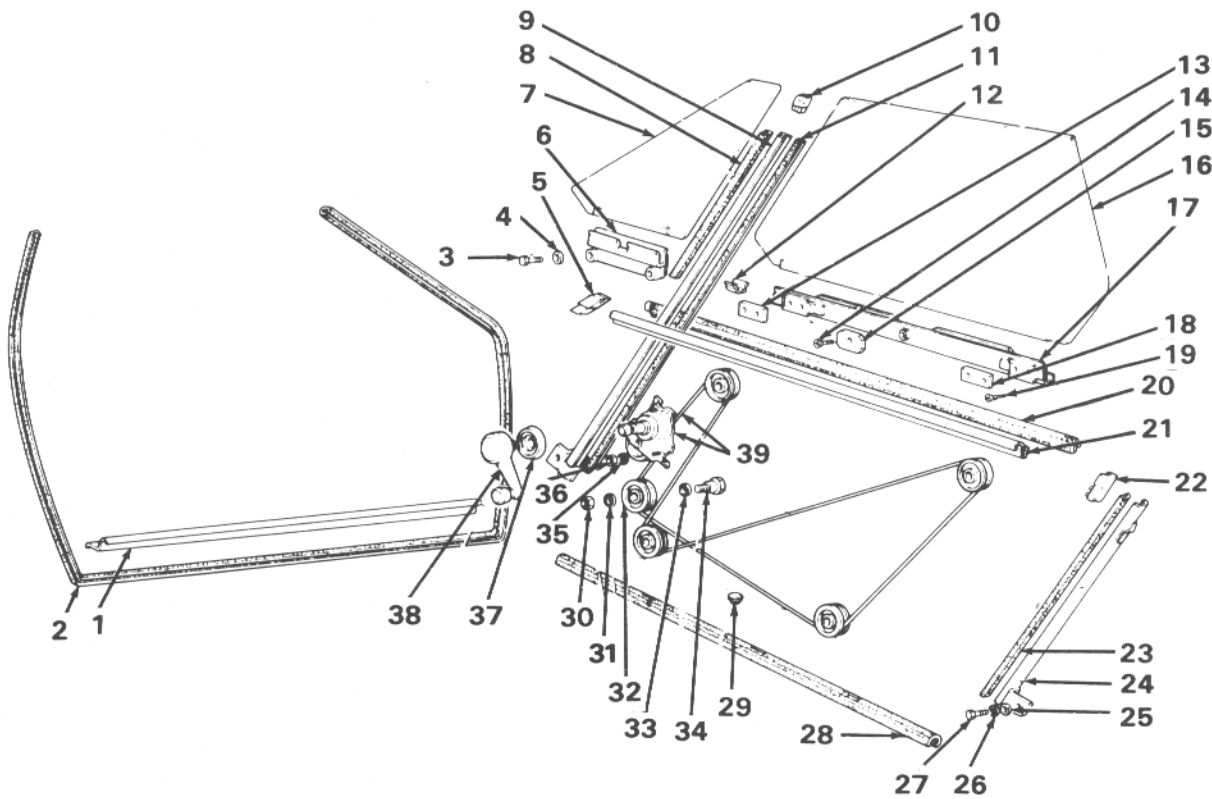
## STRIKER PLATE ADJUSTMENT

Loosen two screws (1) and shift plate (2) as necessary.

1. Screws 2. Striker plate







- |                     |                  |                  |                  |                      |
|---------------------|------------------|------------------|------------------|----------------------|
| 1. Doorsill molding | 9. Pillar        | 17. Guide        | 25. Washer       | 33. Washer           |
| 2. Weatherstrip     | 10. Pad          | 18. Plate        | 26. Lockwasher   | 34. Bolt             |
| 3. Bolt             | 11. Weatherstrip | 19. Screw        | 27. Bolt         | 35. Lockwasher       |
| 4. Washer           | 12. Clip         | 20. Weatherstrip | 28. Weatherstrip | 36. Nut              |
| 5. Boot             | 13. Plate        | 21. Cover        | 29. Pad          | 37. Cover            |
| 6. Channel          | 14. Screw        | 22. Boot         | 30. Nut          | 38. Handle           |
| 7. Glass            | 15. Pad          | 23. Weatherstrip | 31. Washer       | 39. Window regulator |
| 8. Weatherstrip     | 16. Glass        | 24. Channel      | 32. Pulley       |                      |

**EXPLODED VIEW OF WINDOW ASSEMBLY**

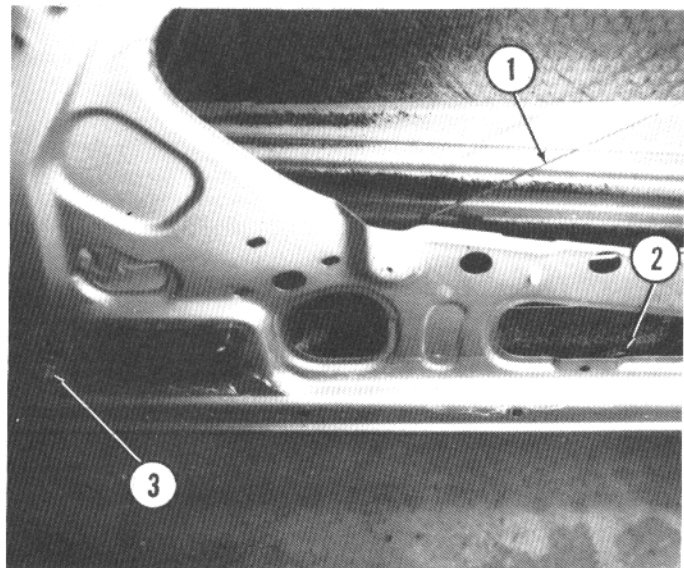
**WINDOW REGULATOR  
REMOVAL AND INSTALLATION**

Remove door panel. Lower window.

Loosen nut (3) on adjustable pulley and relieve tension on control cable (1).

Unhook control cable from five pulleys (2).

1. Control cable 2. Pulley 3. Nut



# Doors-Door Glass-Lock Mechanism

701  
.27/30/31

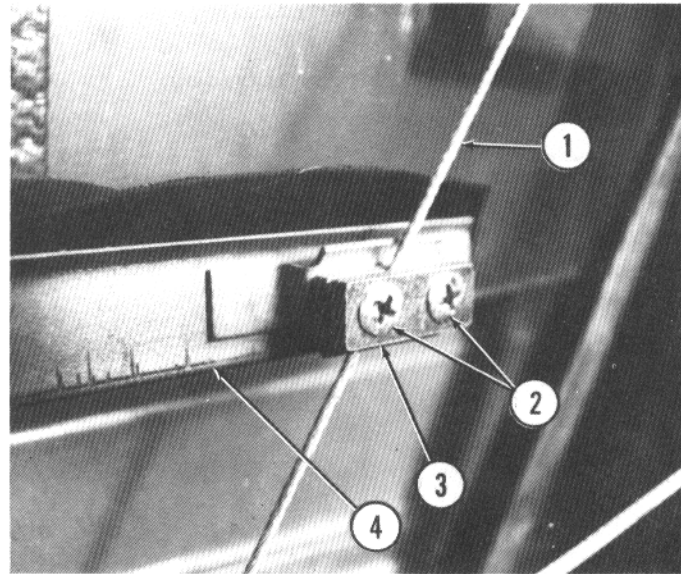
Page 70-17

Pull window up part way and remove two screws (2) and plate (3) holding control cable (1) to right side of window (4).

Repeat above procedure to remove cable from left side of window.

Lower window.

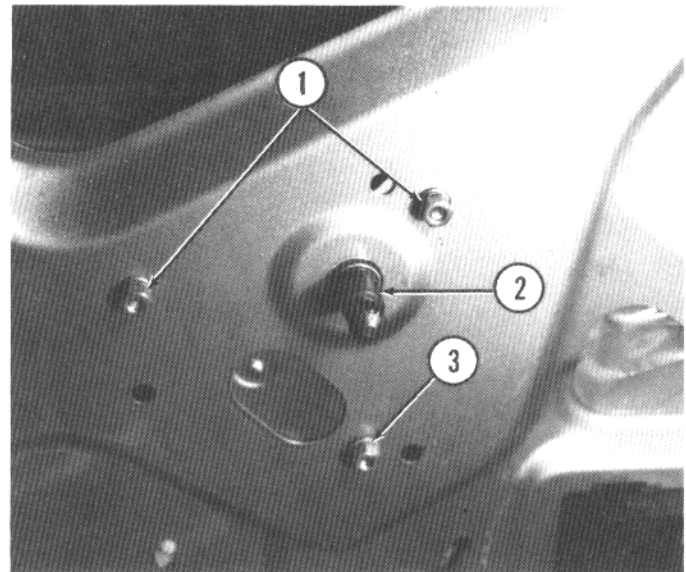
1. Control cable 2. Screws 3. Plate 4. Window



Remove three nuts (1 and 3) and washers holding regulator (2) to door. Remove regulator from door complete with control cable.

Install in reverse order. Adjust regulator.

1. Nuts 2. Regulator 3. Nut



## ADJUSTMENT

Loosen four screws (1) through two plates holding control cable (2) at left and right side of window.

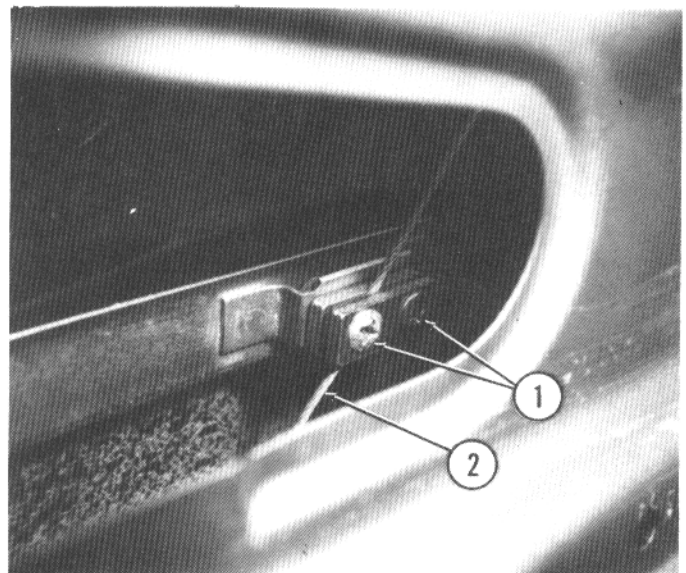
Lower window to full down position.

Set regulator handle in "wide open" position.

Tighten screws securely.

After adjustment, glass must run full length of its travel. Control cable must wind and unwind properly on regulator pulley.

1. Screws 2. Control cable



To adjust tension of control cable (1), loosen nut (2) on adjustable pulley.

Move pulley in slot (3) to set tension. Tighten nut.

1. Control cable 2. Nut 3. Slot

