

## HALF-SHAFT

### REMOVAL AND INSTALLATION

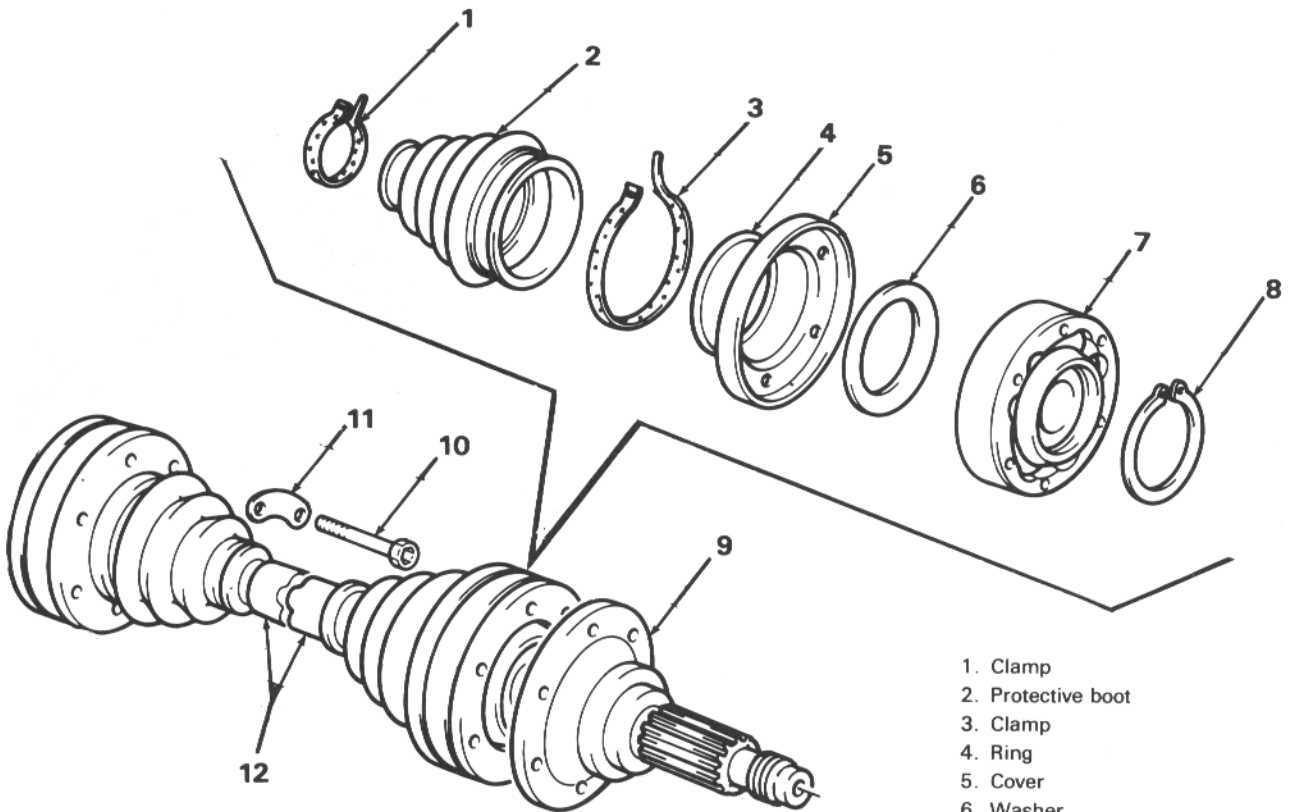
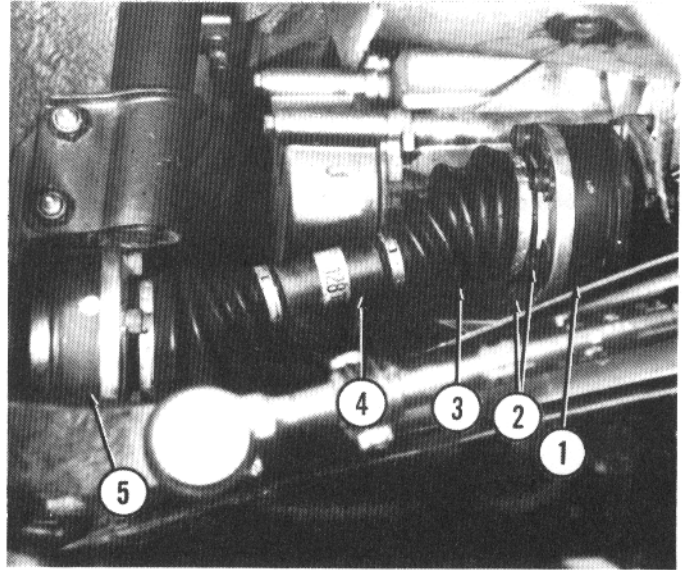
Raise vehicle and remove wheel.

Remove six Allen head bolts (2) at each end of half-shaft.  
Remove half-shaft (4) complete with CV joints (1 and 5).

**NOTE:** Discard Allen head bolts and replace with new ones for installation.

Installation is reverse of removal. Torque new Allen head bolts to 31 ft. lbs. (4.3 kgm).

1. Inner CV joint 2. Bolts 3. Protective boot 4. Half-shaft  
5. Outer CV joint



1. Clamp
2. Protective boot
3. Clamp
4. Ring
5. Cover
6. Washer
7. Constant velocity joint
8. Circlip
9. Stub shaft
10. Allen bolt
11. Plate
12. Half-shaft

## CONSTANT VELOCITY JOINT

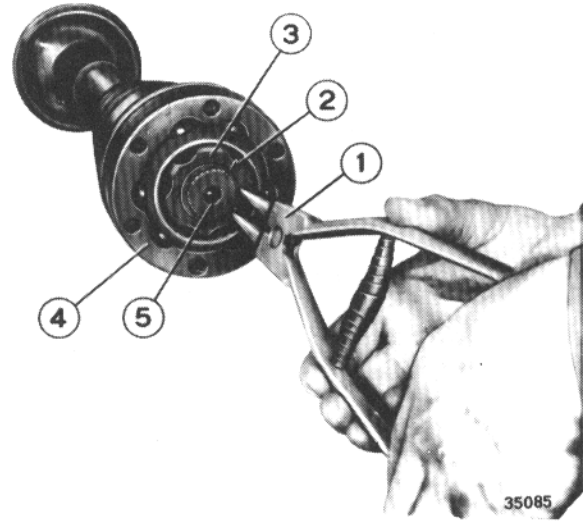
### REMOVAL

To remove either CV joint, remove large clamp holding protective boot on CV joint.

Remove circlip (2) with pliers A. 81115 (1).

Slide CV joint off half-shaft (5).

1. Pliers A. 81115 2. Circlip 3. Spherical ball 4. Socket  
5. Half-shaft



### INSTALLATION

Slide CV joint onto half-shaft (1), ensuring that side with reference groove (5) faces toward end of shaft.

Install circlip on end of shaft with pliers A. 81115.

Grease CV joint socket and inside of protective boot (2). Use no more than 3.2 ozs. (.10 kg) of grease.

Slide boot over joint and secure clamp (3) with pliers A.81118 (4).

1. Half-shaft 2. Boot 3. Clamp 4. Pliers A.81118  
5. Reference groove

