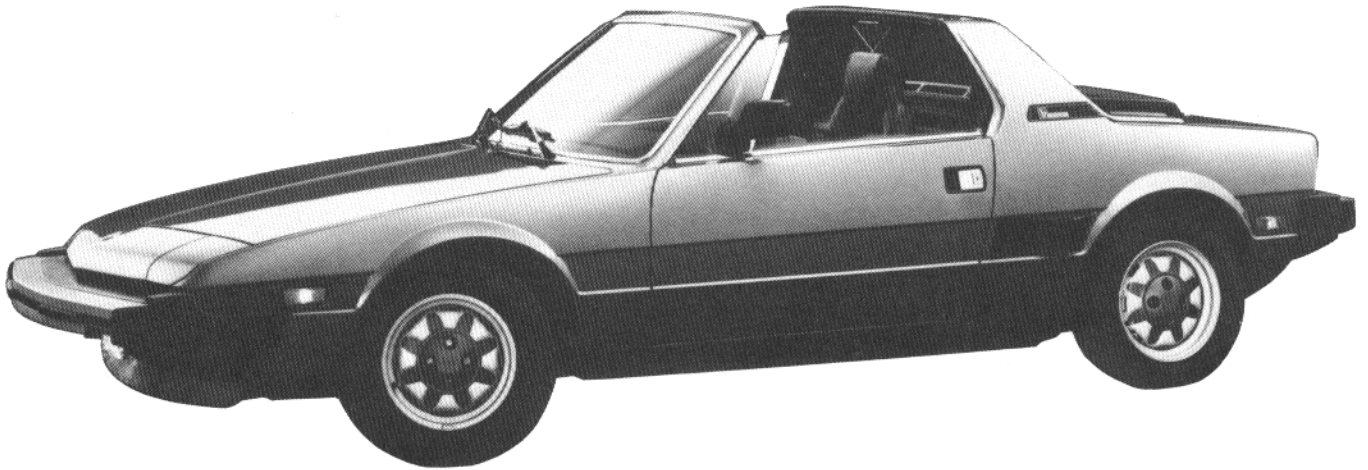


---

# GENERAL INFORMATION - MAINTENANCE - 00

	Page
Identification Data .....	00-3
Tune-Up Specifications .....	00-4
Engine and Drive Train Specifications .....	00-6
Chassis Specifications .....	00-7
Electrical Specifications .....	00-8
Weights and Dimensions .....	00-9
Capacities .....	00-10



**X 1/9**



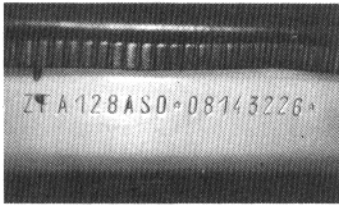
# General Information

00

Page 00-3

## IDENTIFICATION DATA

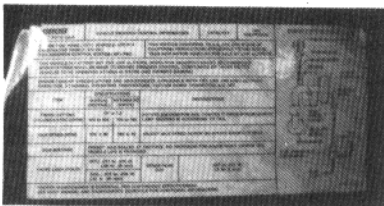
**Chassis Type and Identification Number** - Punched on cowl on right side of front luggage compartment (above battery box).



**Chassis Plate** - Located on right side of front luggage compartment.



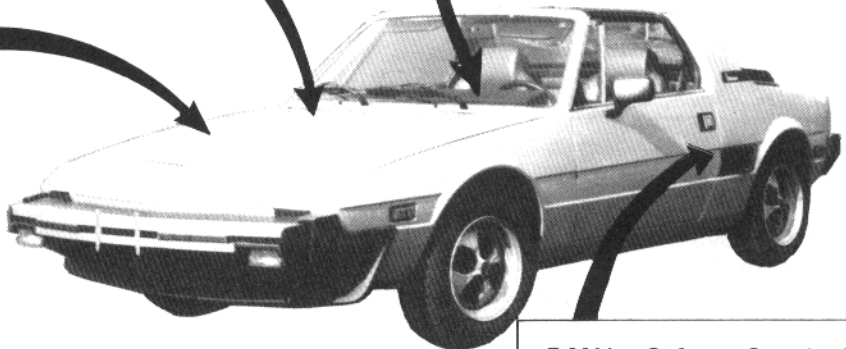
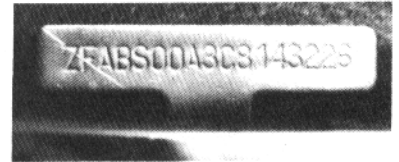
**E.P.A. Regulations Conformity Tag** - Air pollution control specifications for correct engine tune-up and adjustments. Located in engine compartment on left side.



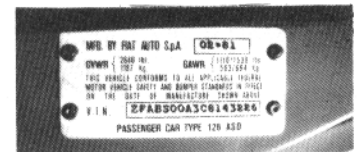
**Engine Type and Identification Number** - Punched on crankcase, flywheel side.



**F.M.V. Safety Standard 115 Tag** - Type of vehicle and chassis number. Located on left panel top between instrument cluster and windshield.



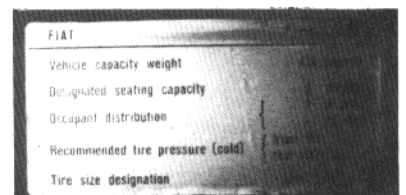
**F.M.V. Safety Standard Conformity Tag** - Month and year of manufacture, gross vehicle weight rating, gross axle weight rating, chassis number and vehicle type. Located on left door jamb.



**Vehicle Emission Control Information Label** - Located on left door jamb.



**F.M.V. Safety Standard 110 Tag** - Tire data and vehicle capacity. Located on right door jamb.



---

**TUNE-UP SPECIFICATIONS (VEHICLES WITH CARBURETOR)**


---

Valve clearance (engine cold):	
— Intake .....	0.011 to 0.014 in. (0.28 to 0.35 mm)
— Exhaust .....	0.015 to 0.018 in. (0.38 to 0.46 mm)

---

Fuel pump pressure at 4000 rpm .....	3.5 to 4.3 psi
--------------------------------------	----------------

---

Spark plugs:	<b>Normal</b>	<b>Resistor</b>
— Type .....	42XLS	R42XLS
..... AC	W175T30	W175TR30
..... Bosch	N9Y	RN9Y
..... Champion	CW7LP	CW7LPR
..... Marelli	0.023 to 0.027 in.	0.027 to 0.031 in.
— Gap .....	(0.6 to 0.7 mm)	(0.7 to 0.8 mm)

---

Ignition timing .....	5° BTDC at 800 to 850 rpm
-----------------------	---------------------------

---

Distributor advance:	
— Centrifugal .....	23° to 27° at 5500 rpm
— Total (ignition timing and centrifugal) .....	28° to 32° at 5500 rpm
— Vacuum	
with air pump .....	16° to 18° at 12 in. Hg
without air pump .....	26° to 30° at 12 in. Hg

---

Idle speed (1) .....	800 to 900 rpm
----------------------	----------------

---

CO level (at idle) (1) .....	1.0 to 2.0%
------------------------------	-------------

---

(1) Idle speed and CO must be checked and adjusted with hose to reed valve or check valve pinched off.

# General Information

00

Page 00-5

## TUNE-UP SPECIFICATIONS (VEHICLES WITH FUEL INJECTION)

Valve clearance (engine cold):	
— Intake .....	0.011 to 0.014 in. (0.28 to 0.35 mm)
— Exhaust .....	0.015 to 0.018 in. (0.38 to 0.46 mm)
Fuel pump pressure .....	39 to 45 psi (2.7 to 3.2 bar)
Spark plugs:	
— Type .....	Champion RN9Y
— Gap .....	0.027 to 0.031 in. (0.7 to 0.8 mm)
Ignition timing .....	10° BTDC at 800 to 850 rpm
Distributor advance:	
— Centrifugal .....	16° to 20° at 3500 rpm
— Total (ignition timing and centrifugal) .....	26° to 30° at 3500 rpm
— Vacuum .....	12° to 16° at 11 in. Hg
Idle speed .....	800 to 900 rpm
CO level (at idle) .....	0.5 to 0.9%

---

**SPECIFICATIONS**


---

**ENGINE**

## Type:

— Vehicles with carburetor	
with air pump .....	138AS.031
without air pump .....	138AS.040
— Vehicles with fuel injection .....	138BS.040
Arrangement .....	Mid transverse
Number of cylinders .....	Four
Bore .....	3.40 in. (86.4 mm)
Stroke .....	2.52 in. (63.9 mm)
Displacement .....	91.44 cu. in. (1498 cc)
Valve arrangement .....	Overhead valves. Single overhead camshaft driven by toothed timing belt.
Compression ratio .....	8.5 to 1
Horsepower rating, SAE net:	
— Vehicles with carburetor	
with air pump .....	66 at 5250 rpm
without air pump .....	67 at 5250 rpm
— Vehicles with fuel injection .....	75 at 5500 rpm
Torque rating, SAE net:	
— Vehicles with carburetor	
with air pump .....	76 ft. lbs. at 2500 rpm
without air pump .....	77 ft. lbs. at 2500 rpm
— Vehicles with fuel injection .....	80 ft. lbs. at 3000 rpm

---

**CLUTCH**

Type .....	Dry single plate, diaphragm spring, hydraulically controlled, with no pedal free travel.
------------	--

---

**TRANSMISSION**

Gears .....	5 forward, 1 reverse	
Gear ratios to 1:	<b>1979-80</b>	<b>1981-82</b>
— First .....	3.583	3.583
— Second .....	2.235	2.235
— Third .....	1.454	1.461
— Fourth .....	1.042	1.033
— Fifth .....	0.863	0.863
— Reverse .....	3.714	3.714

---

**DRIVING AXLE**

Type .....	Combined with transmission. Helical-toothed cylindrical gears.
Final drive ratio .....	13/53 (4.077 to 1)
Power drive to rear wheels .....	By axle shafts connected to final drive and to wheels through constant-velocity ball joints.

---



**ELECTRICAL SYSTEM**

## Battery:

— Voltage .....	12
— Capacity at 20 hr. discharge rate .....	60 Ah

## Alternator:

— Continuous current rating	
Bosch .....	65 amps
Marelli .....	55 amps

## Voltage regulator:

— Regulating voltage at 77°F (25°C) .....	13.8 to 14.2
---	--------------

## Starter:

— Type .....	Direct drive. Direct engagement by solenoid and freewheeling pinion.
— Power rating	
Bosch .....	0.8 kW
Marelli .....	0.9 kW

## Ignition system:

— Type .....	Bosch breakerless electronic
— Spark advance .....	Centrifugal and vacuum
— Pickup coil resistance .....	890 to 1285 ohms
— Ignition coil resistance at 68°F (20°C)	
primary .....	1.1 to 1.7 ohms
secondary .....	6,000 to 10,000 ohms
— Ballast resistor resistance .....	0.85 to 0.95 ohms



# General Information

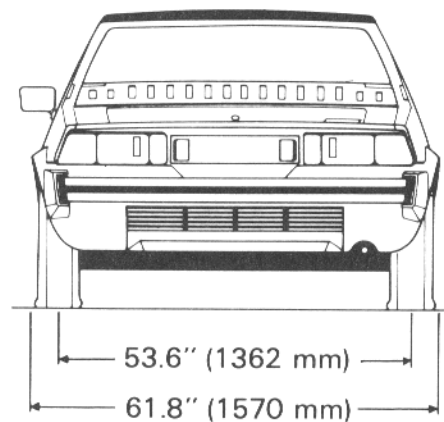
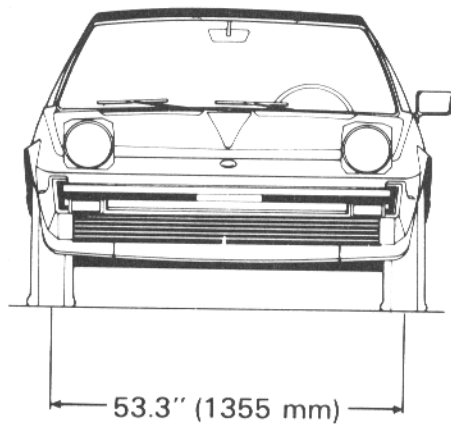
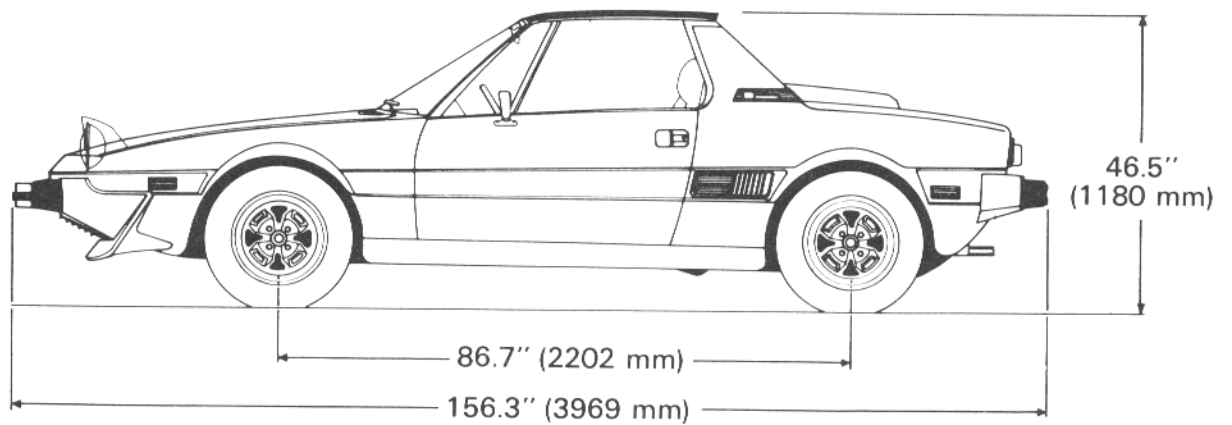
00

Page 00-9

## WEIGHTS

Curb weight:		
— Vehicles with carburetor with air pump .....	2130 lbs.	
without air pump .....	2120 lbs.	
— Vehicles with fuel injection .....	2130 lbs.	
For air conditioning, add .....	80 lbs.	
Seating capacity .....		2 persons
Carrying capacity .....		430 lbs.

## DIMENSIONS



## CAPACITIES

UNIT	QUANTITY			REFILL
	lt	kg	U.S. Units	
Fuel tank	47	—	12.2 gals.	Unleaded gasoline with octane rating of at least 91 (Research Method)
Radiator, cylinder jackets and heating system	11.6	—	12.2 qts.	Use 50-50 antifreeze and water mixture
Engine sump and filter (1)	4.1	3.7	4.3 qts.	Low-ash content detergent oils – API Service SE to MIL-L-46152
Transmission and Axle	3	2.7	3.2 qts.	SAE 90 oil (not EP) containing anti-wear additives
Steering box	0.140	0.127	5.3 ozs.	SAE 90 EP oil or lithium-base grease with molybdenum disulphide
Constant-velocity joints and boots (each)	—	0.100	3.2 ozs.	Lithium-base grease with molybdenum disulphide
Brake hydraulic system	0.440	0.440	1 pt.	DOT 3 Motor Vehicle Brake Fluid to F.M.V.S.S. No. 116
Clutch hydraulic system	0.180	0.180	6.4 ozs.	Same as brake system

(1) Total capacity including sump, filter and lines is 5 qts. (4.7 lt). Amount indicated in table is requirement for periodic oil changes.