

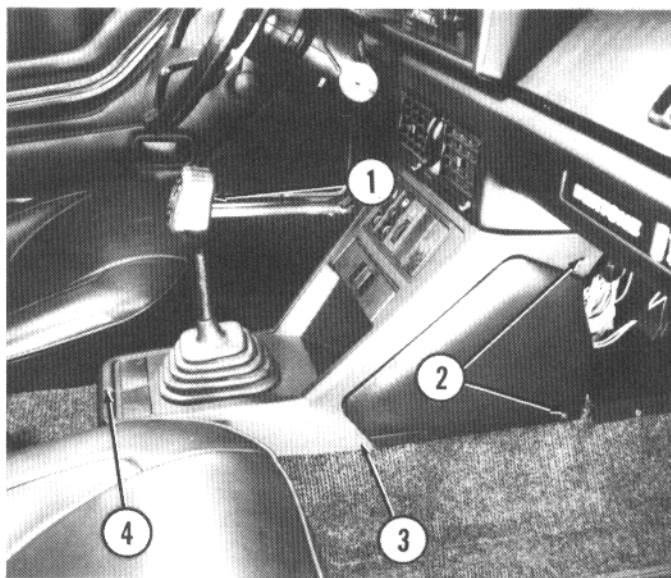
REMOVAL AND INSTALLATION

Unscrew gearshift knob (1).

Remove five screws (2 and 4) holding lower console (3).

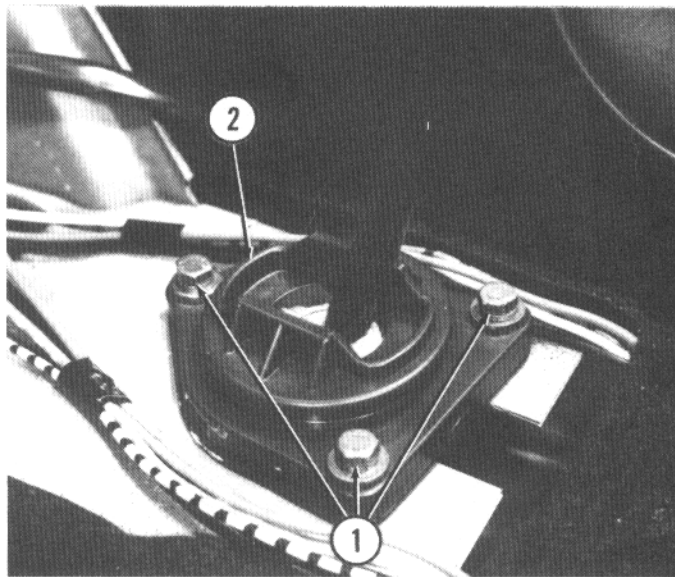
Tilt end of console up until it clears gearshift lever and lay it to one side.

1. Gearshift knob 2. Screws 3. Lower console 4. Screw



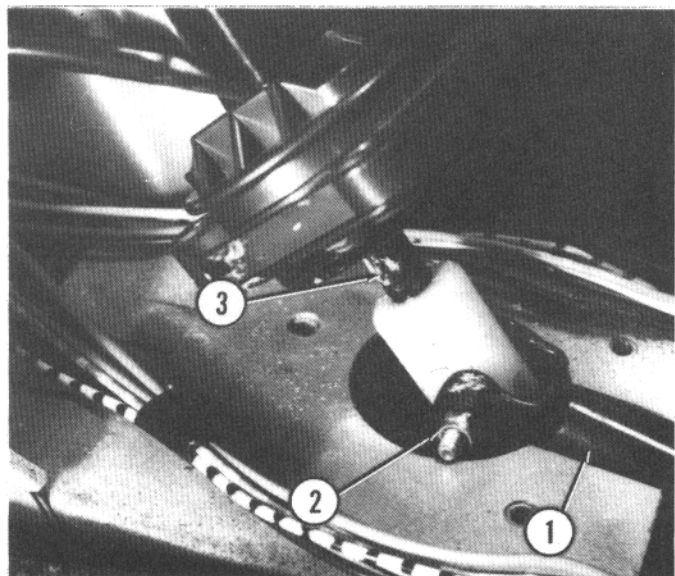
Remove three bolts (1) and washers retaining support (2).

1. Bolts 2. Support



Lift support. Remove nut (2) and bolt holding selector rod (1) to gearshift lever (3). Lift gearshift lever out of vehicle.

1. Selector rod 2. Nut 3. Gearshift lever



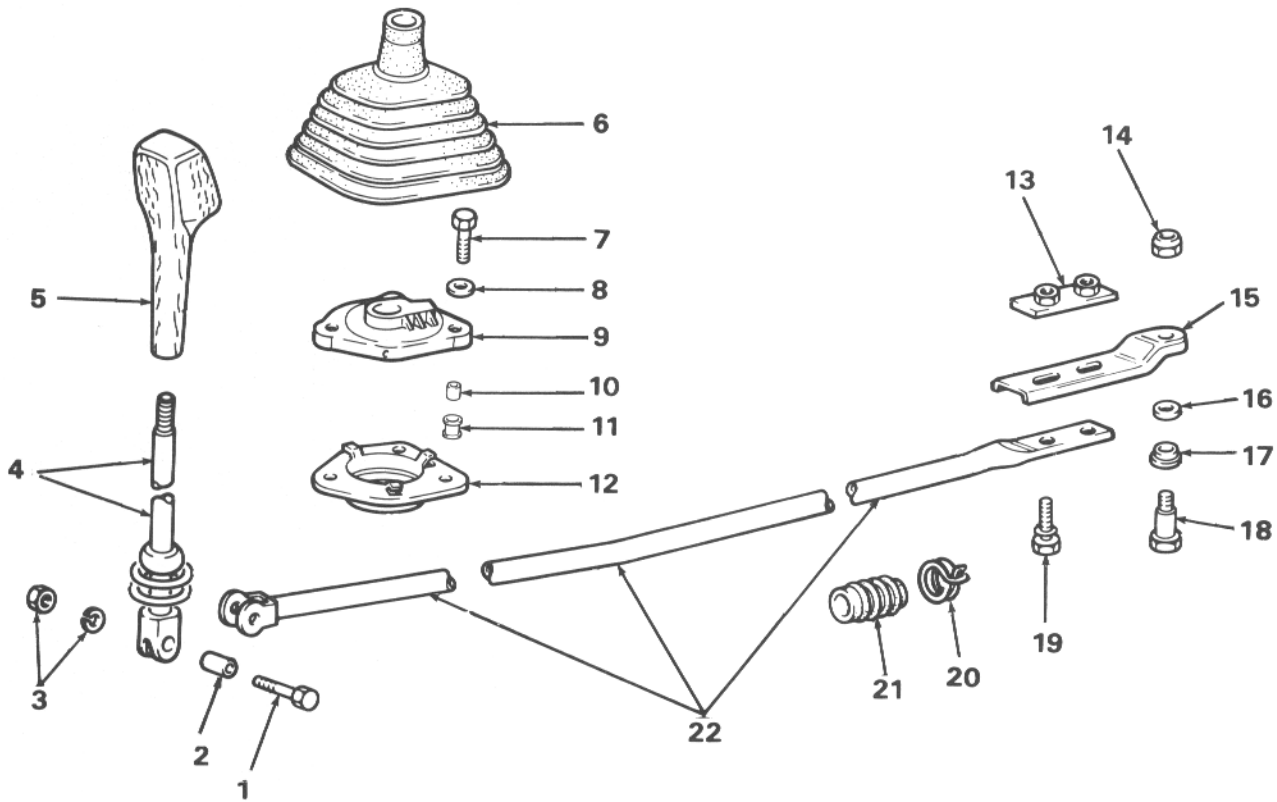
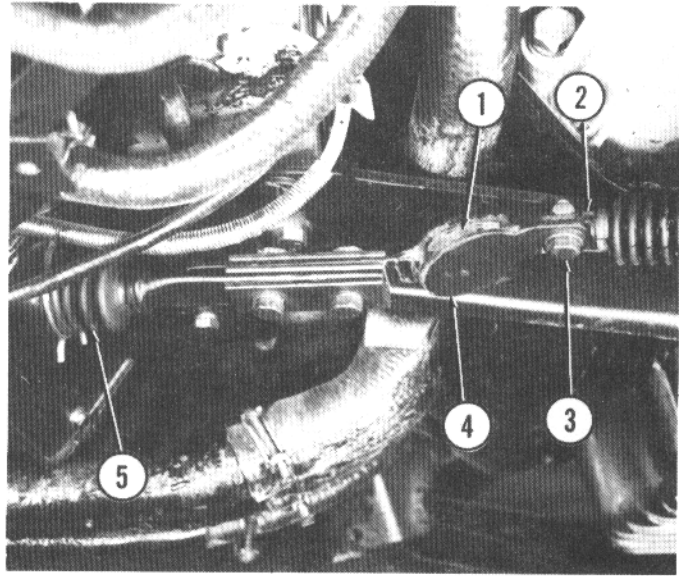
Remove bolt (3) and nut holding transmission link (4) to transmission rod (2).

Remove boot (5). Pull selector rod out of vehicle from rear.

NOTE: Transmission link on vehicles with carburetor does not have flexible rubber coupling (1).

Install in reverse order.

1. Flexible coupling 2. Transmission rod 3. Bolt 4. Transmission link
5. Boot



- | | | |
|---------------------------|-----------------------|------------------|
| 1. Bolt | 9. Cover | 17. Bushing |
| 2. Bushing | 10. Bushing | 18. Bolt |
| 3. Locknut and lockwasher | 11. Grommet | 19. Bolt |
| 4. Gearshift lever | 12. Support | 20. Clamp |
| 5. Gearshift knob | 13. Plate | 21. Boot |
| 6. Gearshift boot | 14. Nut | 22. Selector rod |
| 7. Bolt | 15. Transmission link | |
| 8. Washer | 16. Washer | |

**EXPLODED VIEW OF GEARSHIFT CONTROL ASSEMBLY
(VEHICLES WITH CARBURETOR)**

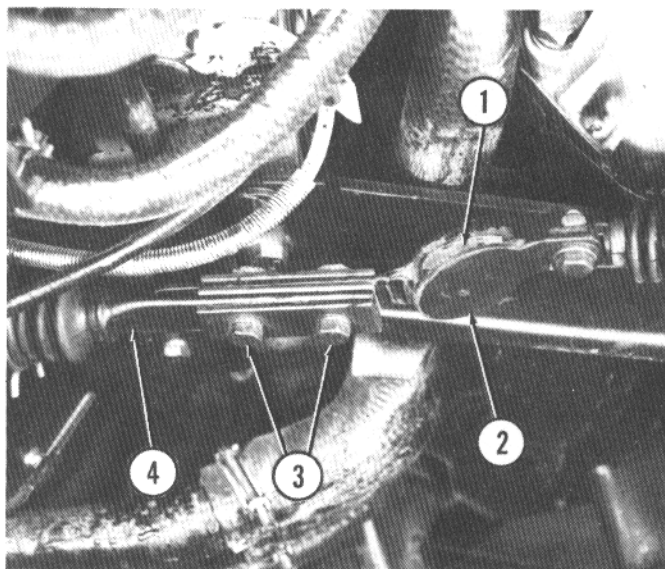
ADJUSTING GEARSHIFT LINKAGE

Place transmission in neutral.

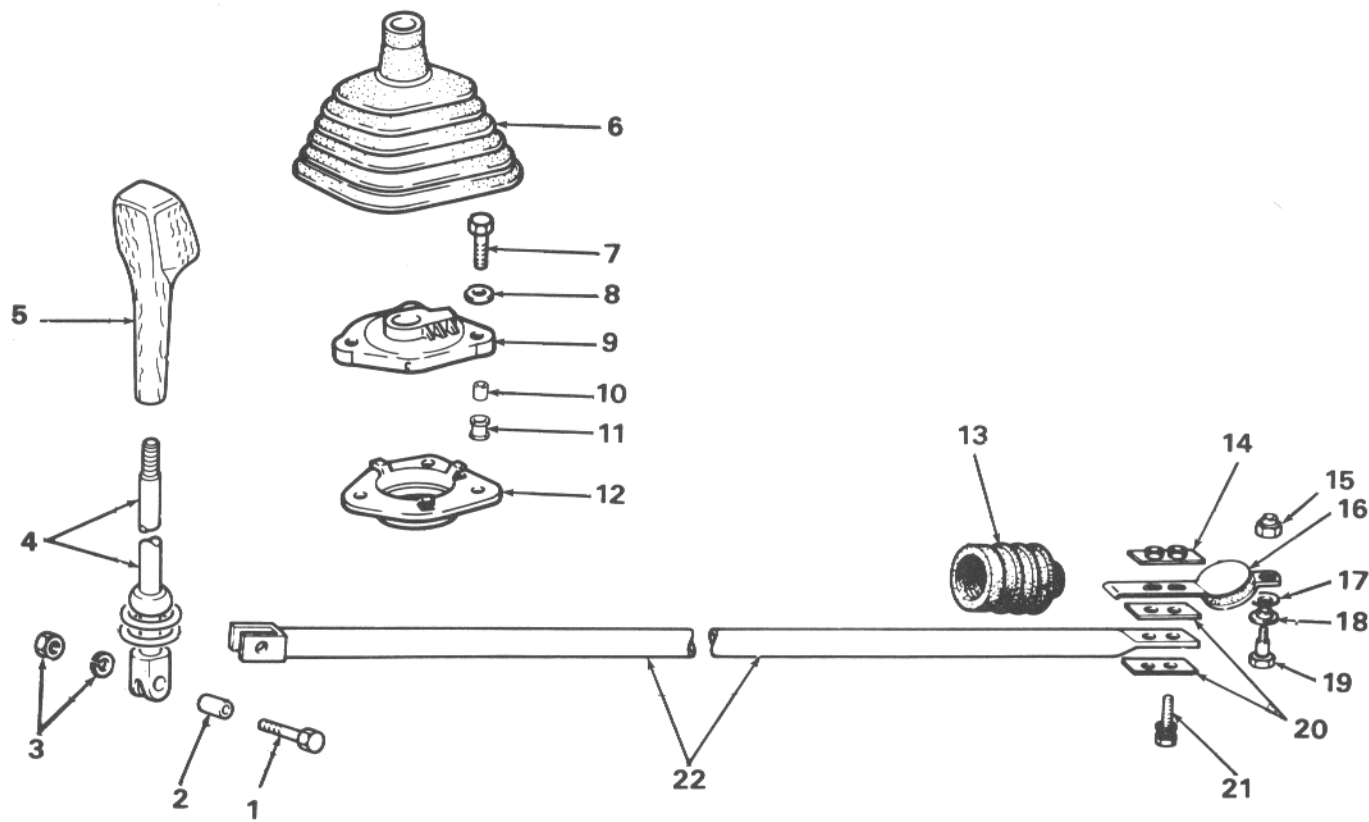
Loosen two bolts (3) holding selector rod (4) to transmission link (2).

Shift transmission link in the elongated holes until gearshift lever is in center of support and is straight up and down. Tighten bolts.

NOTE: Transmission link on vehicles with carburetor does not have flexible rubber coupling (1).



1. Flexible coupling 2. Transmission link 3. Bolts 4. Selector rod



- 1. Bolt
- 2. Bushing
- 3. Locknut and Lockwasher
- 4. Gearshift lever
- 5. Gearshift knob
- 6. Gearshift boot
- 7. Bolt
- 8. Washer

- 9. Cover
- 10. Bushing
- 11. Grommet
- 12. Support
- 13. Boot
- 14. Plate
- 15. Nut
- 16. Transmission link

- 17. Washer
- 18. Bushing
- 19. Bolt
- 20. Plates
- 21. Bolt

**EXPLODED VIEW OF GEARSHIFT CONTROL ASSEMBLY
(VEHICLES WITH FUEL INJECTION)**