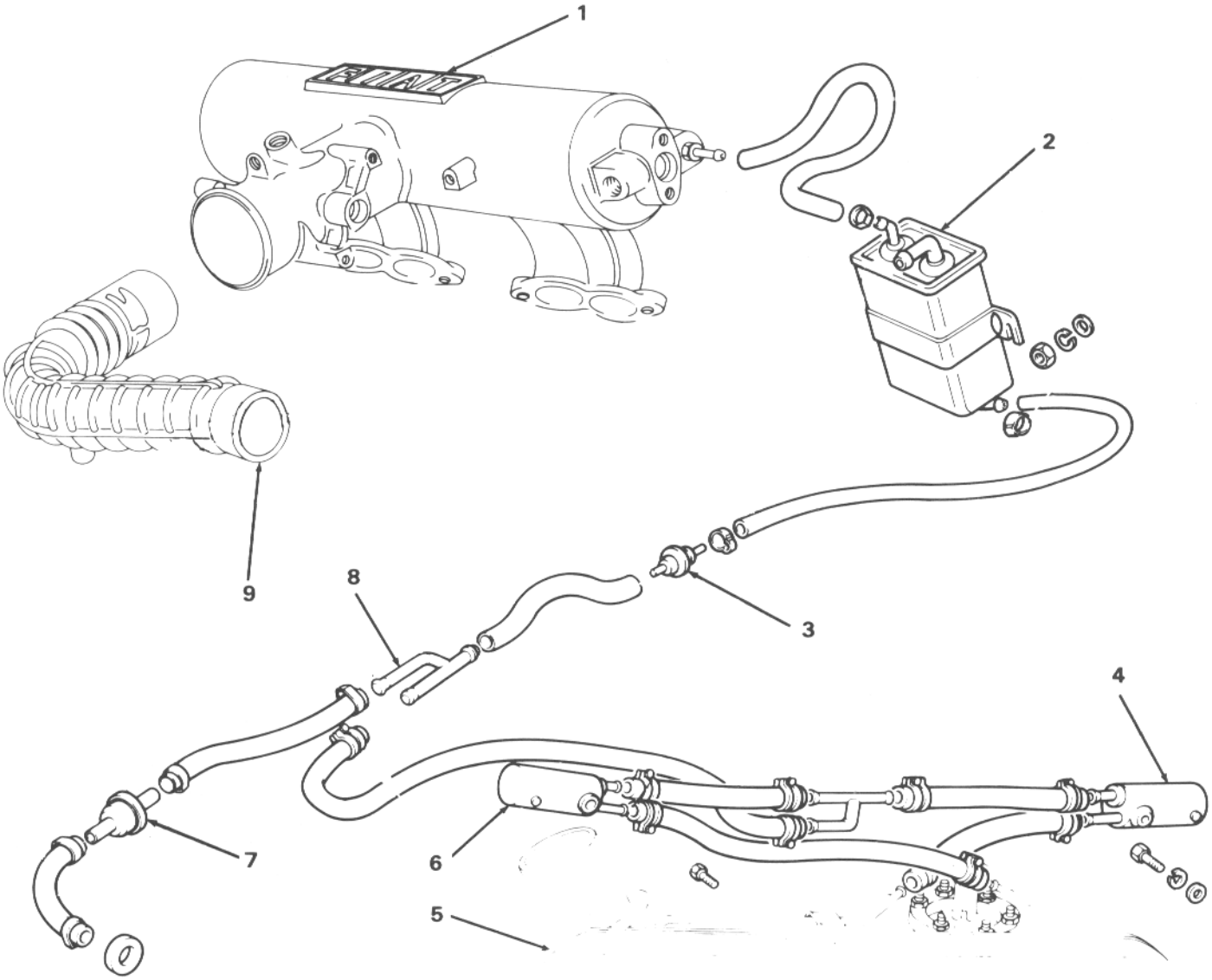
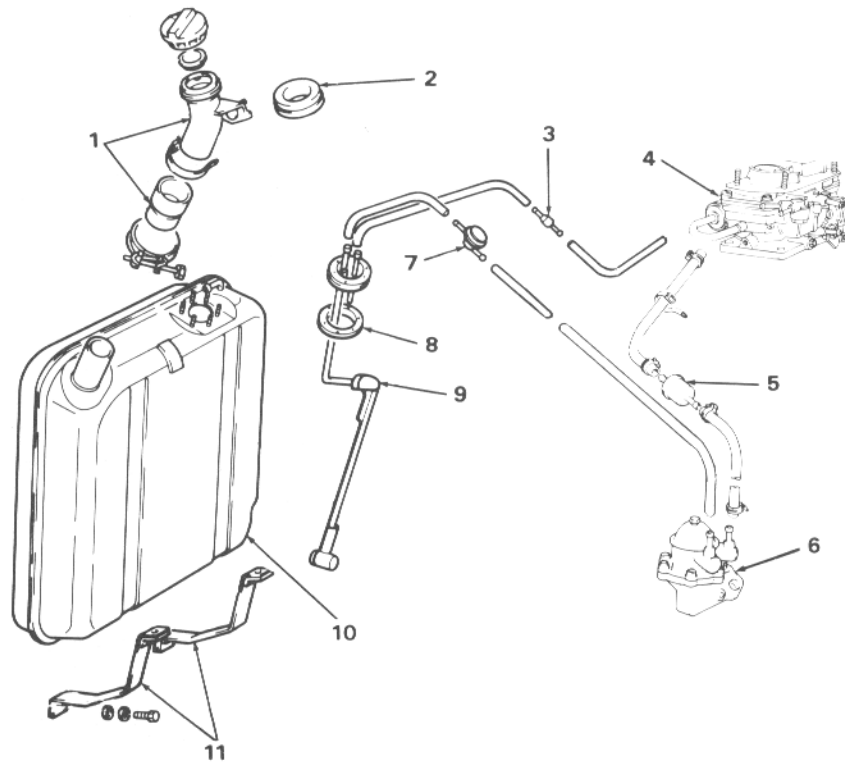


**FUEL VAPOR LINES  
(VEHICLES WITH CARBURETOR)**



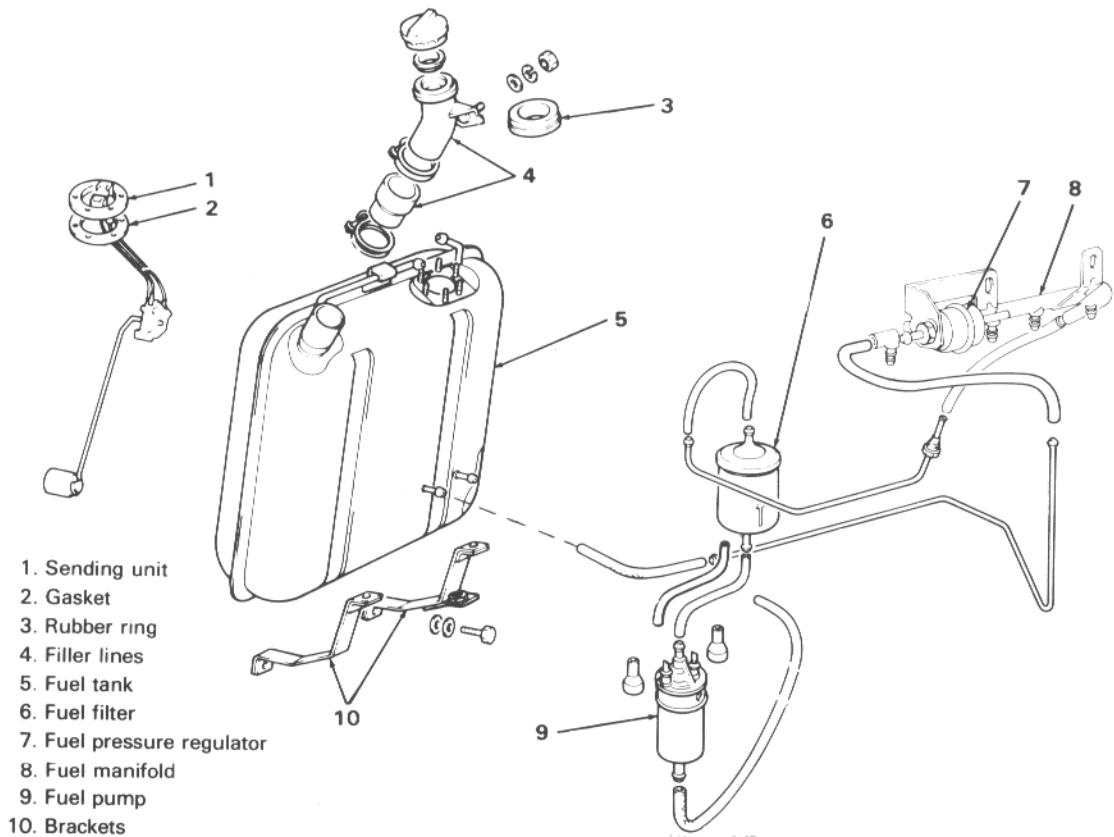
- 1. Air intake
- 2. Charcoal canister
- 3. Two-way valve
- 4. Separator
- 5. Fuel tank
- 6. Separator
- 7. Two-way safety relief valve
- 8. "Y" connector
- 9. Air supply hose

**FUEL VAPOR LINES  
(VEHICLES WITH FUEL INJECTION)**



1. Filler lines
2. Rubber ring
3. Check valve
4. Carburetor
5. Fuel filter
6. Fuel pump
7. Check valve
8. Gasket
9. Sending unit
10. Fuel tank
11. Brackets

VEHICLES WITH CARBURETOR



1. Sending unit
2. Gasket
3. Rubber ring
4. Filler lines
5. Fuel tank
6. Fuel filter
7. Fuel pressure regulator
8. Fuel manifold
9. Fuel pump
10. Brackets

VEHICLES WITH FUEL INJECTION

## FUEL TANK

### REMOVAL AND INSTALLATION

Empty all fuel from fuel tank.

On vehicles with fuel injection, disconnect air hoses from both sides of air flow sensor. Disconnect electrical connector from sensor.

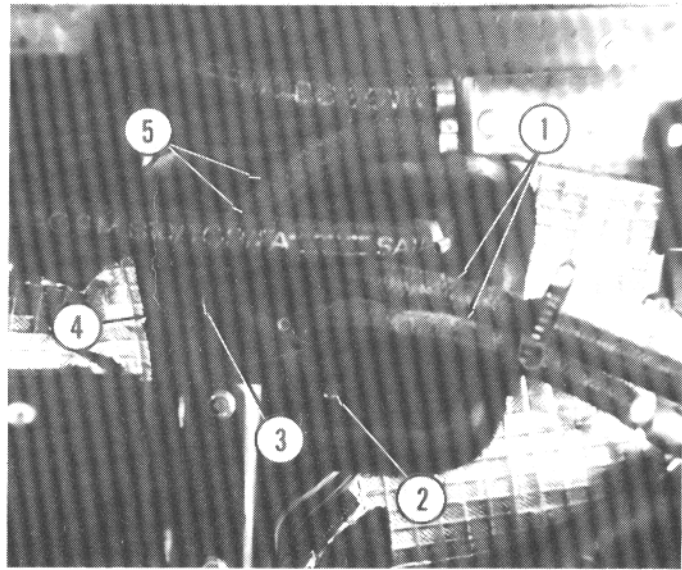
Remove two nuts and two bolts holding sensor bracket to firewall. Remove bracket with air flow sensor attached and set to one side.

Cut hose clamps and disconnect two fuel hoses (1) (carburetor vehicles only) and two vapor hoses (5).

Remove four screws (2 and 3) holding rubber cover (4) and remove cover.

Disconnect three wires from sending unit assembly.

1. Fuel hoses 2. Screw 3. Screw 4. Cover 5. Vapor hoses



Raise and support rear of vehicle.

On vehicles with fuel injection, remove protective cover and fuel inlet and return hoses (1).

On all vehicles, support fuel tank (5) and remove bolts (3 and 6) and support straps (2 and 4). Lower tank from vehicle.

Installation is reverse of removal.

1. Fuel hoses 2. Support strap 3. Bolt 4. Support strap 5. Fuel tank 6. Bolts

